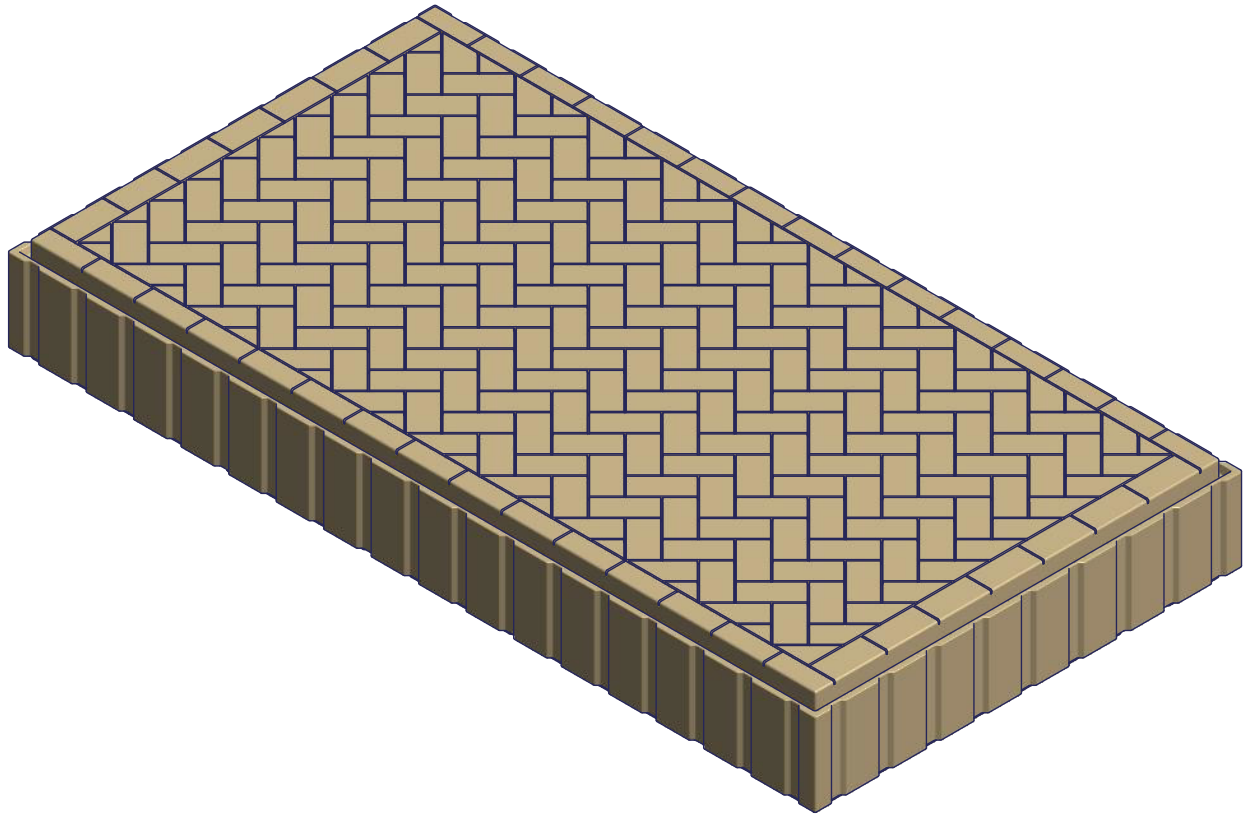




POLYDOCK

PRODUCT ASSEMBLY INSTRUCTIONS



WARNING - PUT SAFETY FIRST

1. To avoid the risk of personal injury or death, study and fully understand the proper operating procedures and safety precautions outlined in this owner's manual before attempting to install or use this dock.
2. NOT COMPLYING WITH THE PROCEDURES AND PRECAUTIONS OUTLINED IN THIS MANUAL MAY RESULT IN PERSONAL INJURY OR DEATH AND WILL INVALIDATE THE WARRANTY.
3. Use caution when handling gasoline; plastic creates static electricity and may ignite flammable gases or liquids resulting in burns.
4. Never jump or dive into the water before the entire subsurface area has been checked for depth. Not doing so may result in personal injury or death.
5. Do not run on the dock; the dock may have uneven surfaces and may be slippery when wet causing a falling injury.
6. To avoid personal injury or product damage, check bolts periodically to ensure hardware and connectors remain securely fastened.
7. If you have any questions about assembly, installation, use or suitability of this product, contact an authorized dealer.

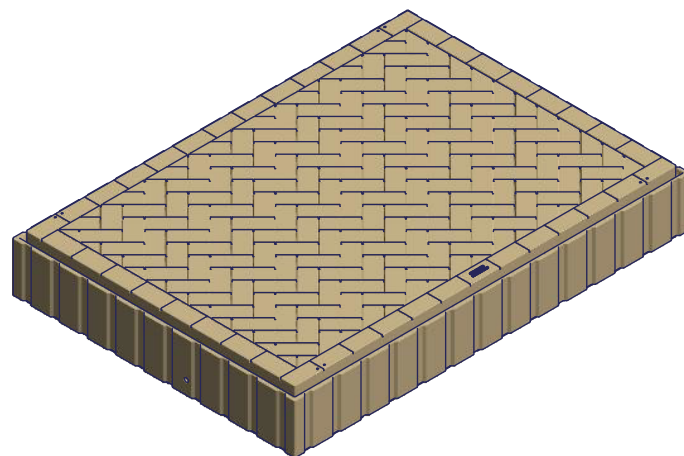
Floating PolyDock Parts

⚠ WARNING Not complying with the procedures and precautions outlined in this manual may result in personal injury or death and will invalidate the warranty.

Check that all components are present before you begin assembly. Do not assemble, use, or install this product if items are missing or damaged.

Components included are dependent upon dock configuration ordered.

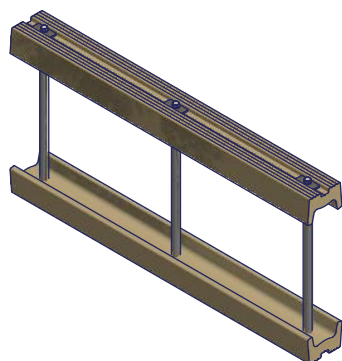
Notched connectors are used to make larger platforms, the notched portion will fill void created when making platforms.



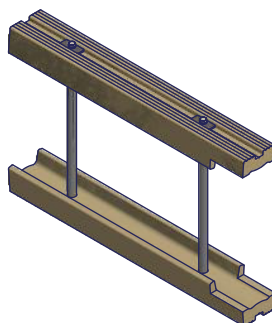
Floating PolyDock (16" tall)

Available Sizes:

Tan	Gray
1022945	1029293 - 3' x 10'
1022946	1029294 - 4' x 6'
1022944	1029295 - 4' x 10'
1022948	1029296 - 5' x 10'
1022947	1029297 - 6' x 8'
1022949	1029298 - 4' Corner



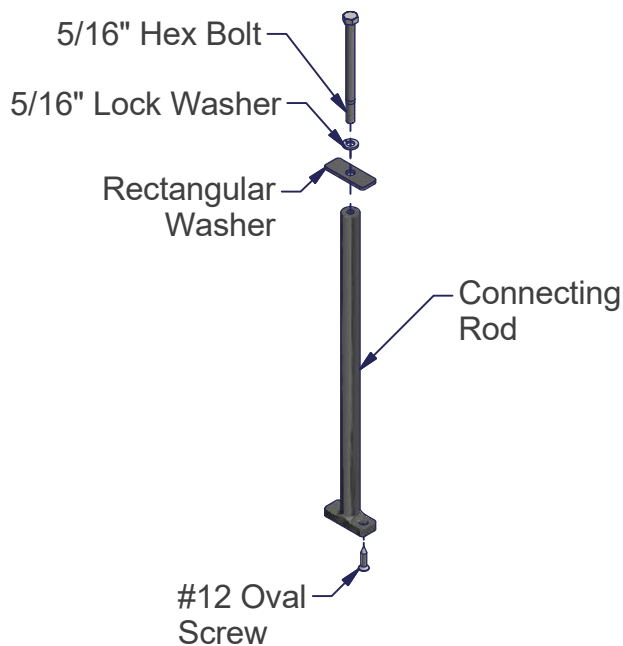
PolyDock Connector



Notched Connector

Available Connectors

Tan	Gray
1007016	1029358 - 1' Side Rear Connector
1003472	1029359 - 2' Notched Connector
1006631	1029360 - 2' Bracket / ShorePort Side Connector
1020827	1029361 - 3' Connector
1026433	1029362 - 3' Notched Connector
1006624	1029363 - 4' Connector
1003441	1029364 - 4' Notched Connector
1007011	1029365 - ShorePort Front Connector
1020829	1029366 - 5' Connector
1024129	1029367 - 5' Notched Connector
1004212	1029368 - 6' Connector
1004271	1029369 - 6' Notched Connector
1006622	1029370 - 8' Connector
1003453	1029371 - 8' Notched Connector



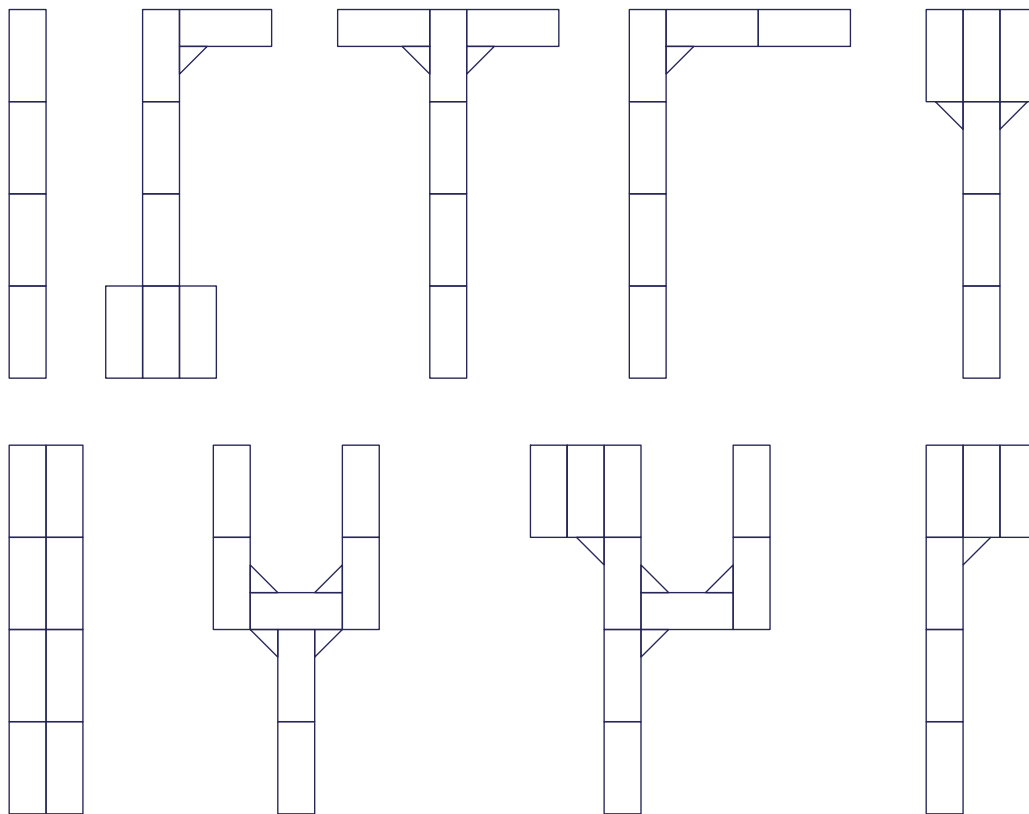
1004512 - Connector Rod 13.875

Floating Dock Layouts and Locations

Consult local authorities for ordinances regarding proper placement and anchoring of your dock.

The most stable floating dock configurations have a “T” or “L” layout or fingers jutting from the sides. Straight floating docks under 6' wide are generally not stable.

The PolyDock is designed to be assembled in virtually any configuration you can imagine - and to be easily reconfigured as your needs change. The following are common dock configurations:



NOTICE

Floating docks are most suitable for small lakes and protected bays only. If your beach area is routinely exposed to boat wakes or large waves, a floating dock may not be the most appropriate dock for your situation. In addition, the dock should be removed during the winter to prevent damage from ice movement.

PolyDock's warranty will not cover damage resulting from the inappropriate location or installation of a floating dock. Floating docks are best used in minimal wave action areas.

CAUTION

To avoid the risk of personal injury, please follow each and all of the following Assembly Instructions. Your safety is the most important issue related to this product.

- Wear protective gloves, clothing and eyewear to avoid personal injury when assembling and installing the dock.
- Fully read and understand each step before proceeding with that step.
- Do not assemble, install or use this product if items are missing or damaged.

PolyDock recommends initial assembly and installation by trained personnel or an authorized PolyDock dealer. Contact your dealer for more information.

Two people will be needed to assemble the dock. The following tools will be needed for assembling the dock.

- Two 9/16" wrenches
- Two 1/2" wrenches
- Phillips & Slotted screw drivers
- Cordless drill or impact wrench
- Torque wrench

Assembly Tip: It is easiest to connect the float sections on the water.

- Wait for a calm period with minimal waves.
- Work in an area where you can stand in the water while connecting the float sections.
- Plan your work so that you can connect the sections that will be furthest from shore first. As those sections are connected, push them out and connect additional sections. The last sections connected should be those that will remain nearest to shore.

If you are unable to connect the docks in the water, find flat area with plenty of room. The docks may be later towed into position.

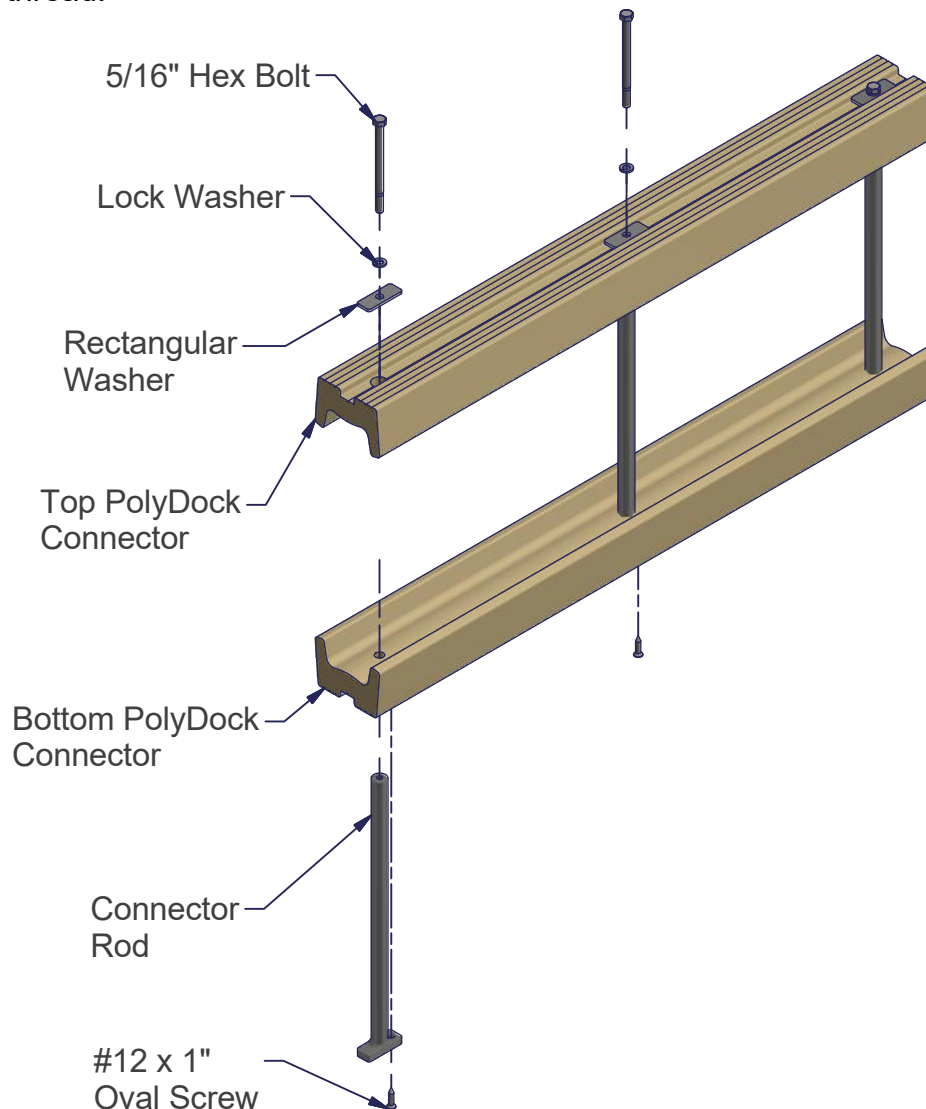
STEP 1

Assemble Connectors

Prior to beginning the connection of the dock sections, assemble the dock connectors. Insert poly dock connector rods into PolyDock bottom connector (with 3/4" diameter holes), secure connector rod with #12 x 1" oval screw (as shown). Fully tighten the oval screw.

Insert 5/16" x 4-1/2" hex bolt through, lock washer, rectangular washer, and the top PolyDock connector and thread into connector rod about 1/4".

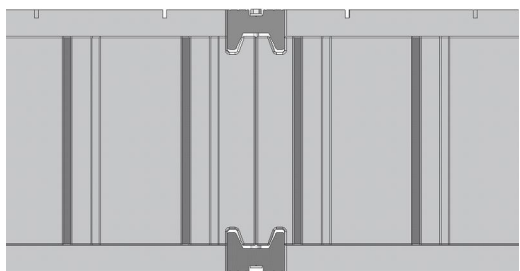
Note: Do not cross-thread.



STEP 2

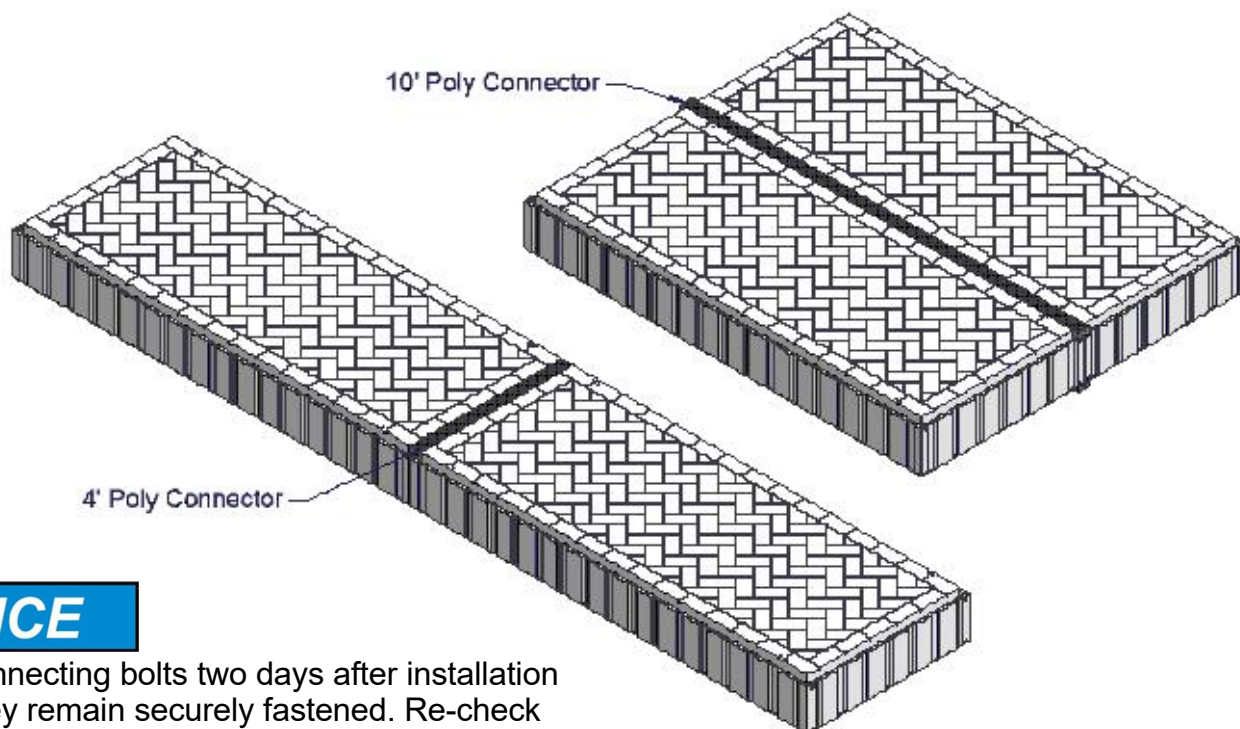
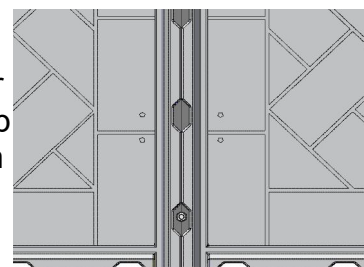
Connect Sections Together

Failure to follow instructions may result in personal injury and may invalidate the applicable warranty. Place the connector loosely on the ridge of one of the dock sections at the intended point of connection. Bring a second dock section to the point of connection. Holding the dock connector push down on the 5/16" bolt head so the bottom of the connector is held down, this will make it easier to connect the dock. Next push the second dock section down so it will go under the connector and slide it into position. The connector should fit over dock ridges on the top and bottom after you have made sure of this you can tighten the bolts from the top to about **20 ft/lbs**. If you are having trouble getting the bottom of the connector to slide in you can add weight or have someone stand on the end of the dock away from the connector, this will bring the bottom portions of the docks together so the connector should slide into position. Make sure vertical channels on docks line up and the poly rods on the connectors will sit inside the channels as shown below.



NOTICE

Do not over tighten bolts. The rectangular connector washer should not be forced up at the ends, nor should it be embedded in the plastic. Over tightening may cause damage to the connector, connector rod, or dock section.



NOTICE

Check all connecting bolts two days after installation to ensure they remain securely fastened. Re-check connecting bolts periodically. Not doing so may result in product damage due to loose connections.

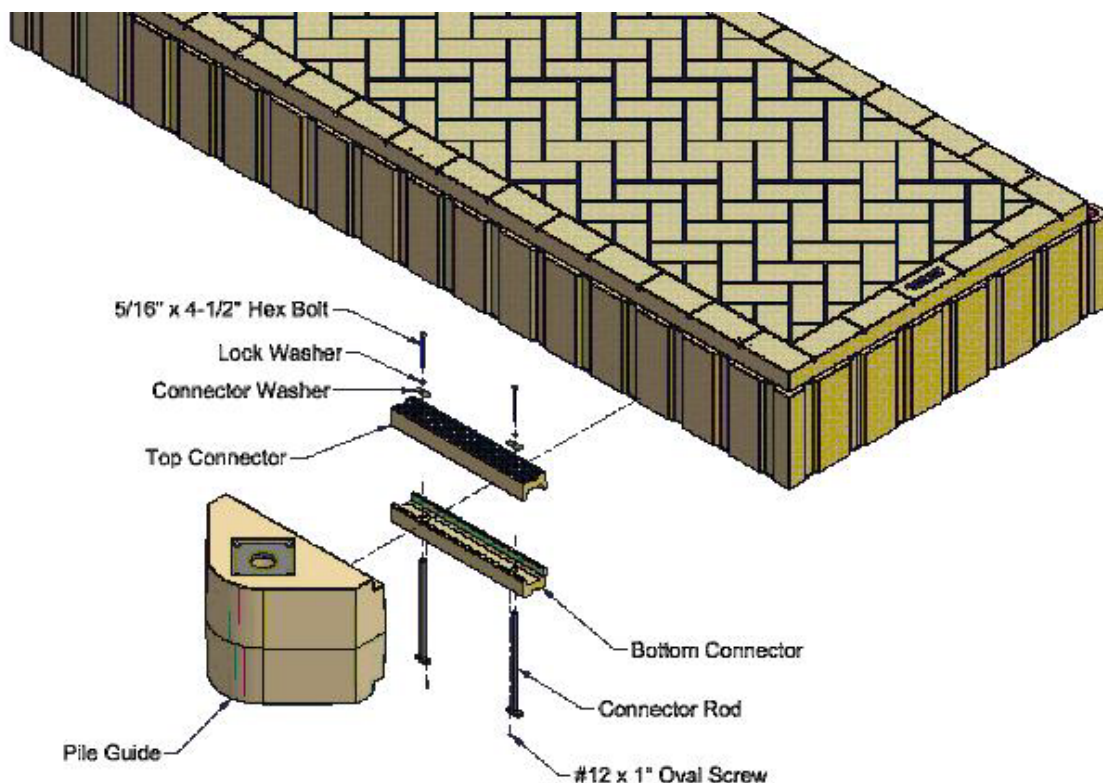
STEP 3

Anchoring

Your dock may be anchored with pile guides, pile hoops, chains, or stiff-arms. The appropriate anchoring will depend on your site. PolyDock recommends initial installation by trained personnel with experience in your area. Contact your authorized ShoreMaster dealer for more information.

Anchoring with Pile Guides

PolyDock's pile guides are designed to easily accept poles from 2" to 4-1/2" in diameter. The appropriate diameter, quantity and sunken depth of pole will depend on your weather conditions and water depth. Poles may be constructed from a variety of materials, including galvanized steel, wood and concrete. Oftentimes, when galvanized steel piping is used, a PVC covering will be placed over the top to improve the appearance. Most poles for residential applications may be sunk by hand using a sledge hammer. Auger tips for the pipe are also available to auger the pipe into the lake bottom.

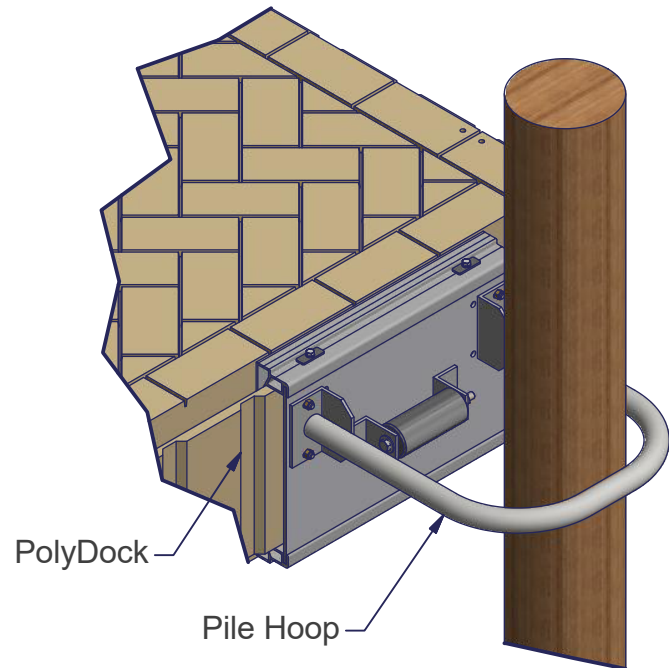


The wear plate will come standard with a 2-7/8" opening for 2-3/8" outside diameter pipe. The opening may be cut to any size up to 5" in diameter (to accommodate a pole up to 4-1/2" outside diameter).

If wear plate is worn down allowing contact between the pipe and pipe bracket, replace the wear plate immediately.

Anchoring with Pile Hoops

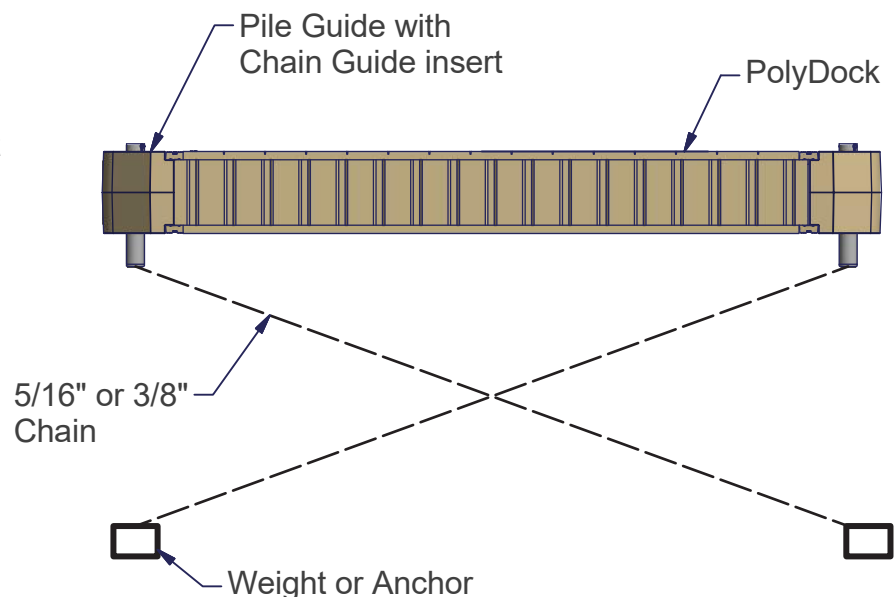
Pile hoops are available in 8", 10" and 12" diameters to accommodate various pile sizes. Pile hoops can also be positioned nearly anywhere along the length of the PolyDock to fit nearly any pile spacing dimensions.



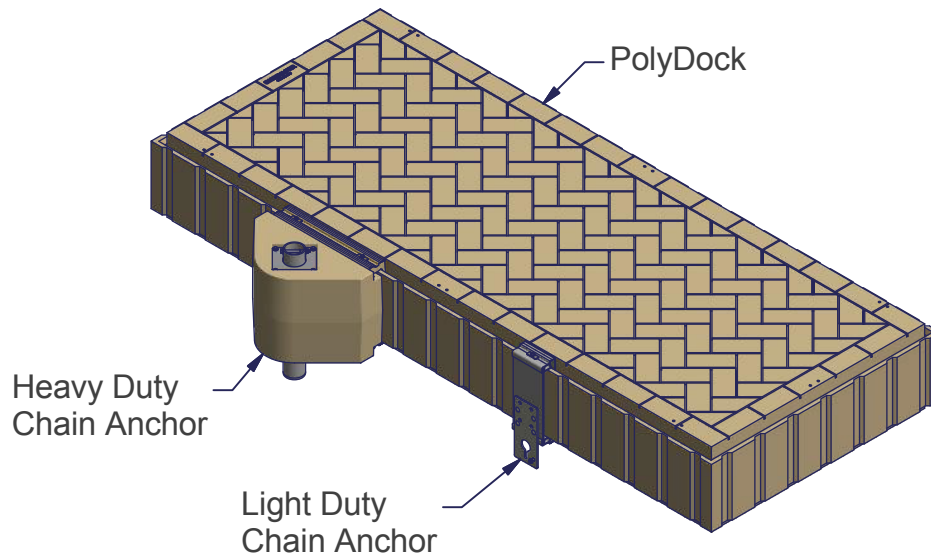
Anchoring with Chains

PolyDock's floating dock may also be anchored with chain connected to a weight or anchor. The chain should be at a 4:1 slope.

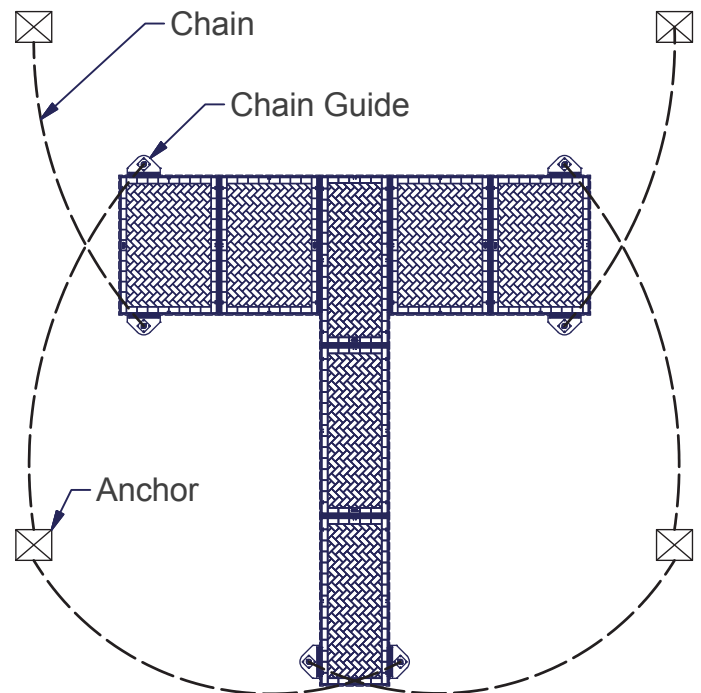
Example: If you are in 10' of water each chain should be 40' long.



The chain guides are connected in the same manner as shown for anchoring with poles. However, a chain guide is inserted in the opening of the pile guide. A light duty chain anchor is also available for smaller installations and calmer water conditions. The chains may be adjusted from on the dock as the water rises or lowers.

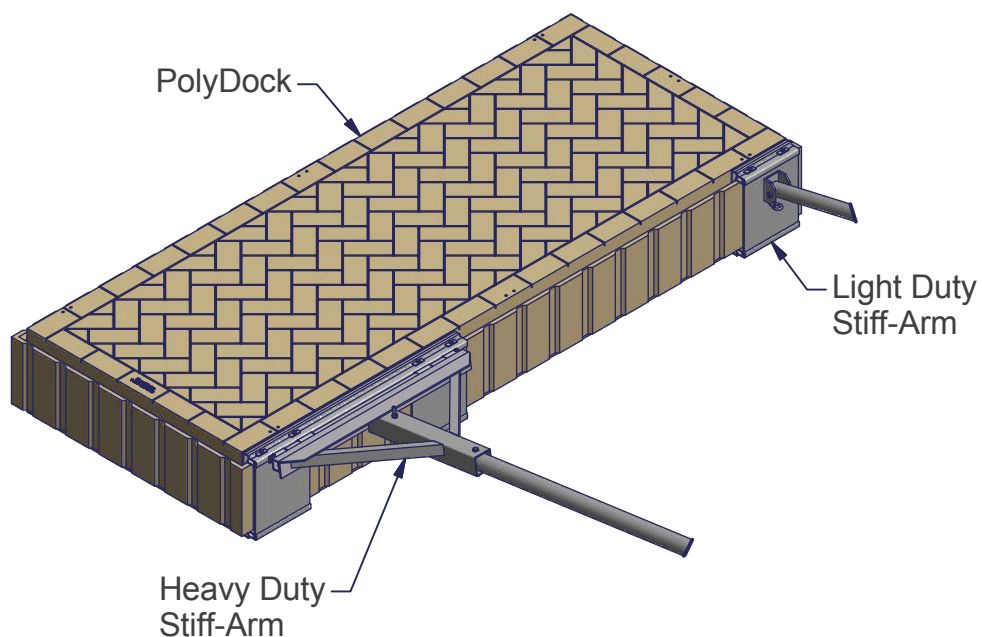
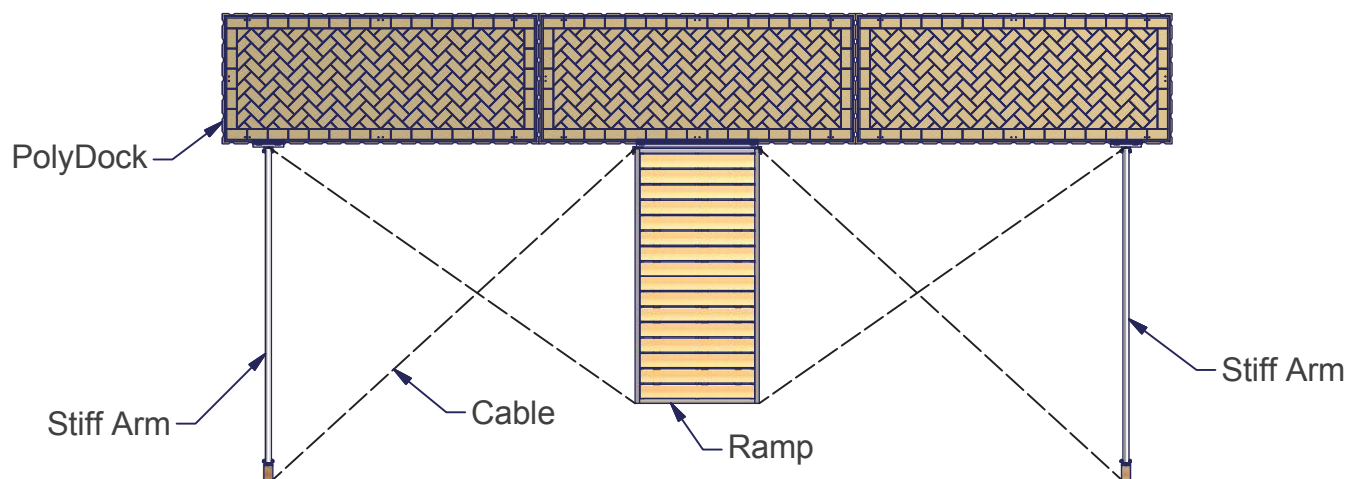


Example: Typical system anchored with chain.



Anchoring with Stiff-Arms

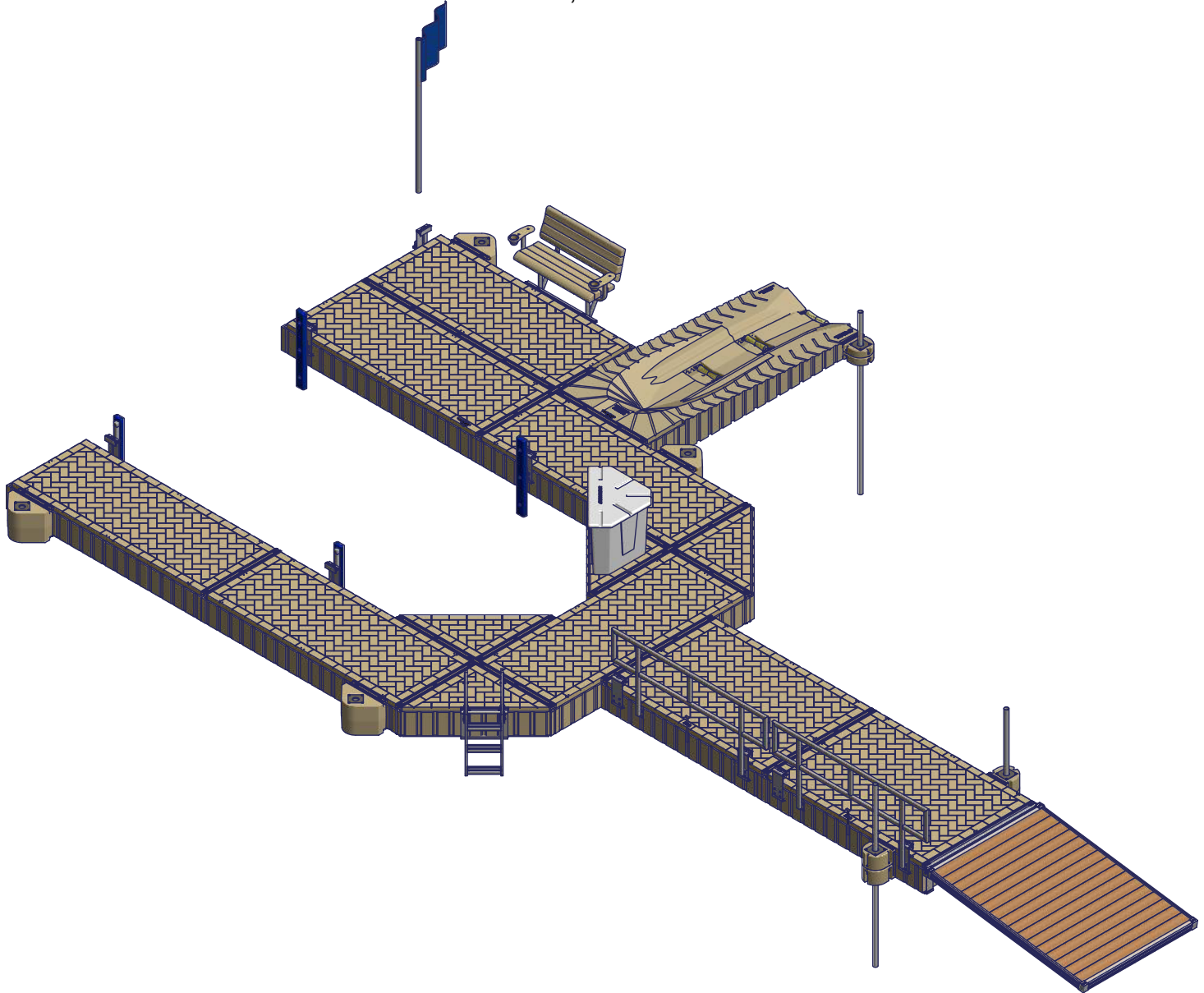
Stiff-Arms can be used when you have a dock that you want parallel to shore and you can't use pile guides or chain. The stiff-arms attach to posts or anchors on shore and use cables to add strength.



STEP 4

Add Accessories

Most accessories come with their own instructions, refer to those instructions for installation.



Ask your dealer about PolyDock's full line of accessories to enhance the enjoyment of your dock:

4' or 8' Ramp
Pivoting Ladder
Dock Boxes
Handrails 4', 6', 8', 10'
Gangways 16', 20', 24'
Dock Patio Furniture

Off-Deck Bench
Flag Pole Holder
Pile Guides
Chain Guides
6' x 8' Ramp
Floating Boat Lift

Vertical Bumper
Slide
4' Corner Section
8" Cleat
Pile Hoops
Stiff-Arms

Connector Rods
Horizontal Bumper
Wheel Kit
ShorePort

Maintenance

- Inspect connections monthly and tighten or replace as necessary.
- **NOTICE** The dock should be removed in the winter. Moving ice may cause severe damage to the dock.
- **NOTICE** The dock should not be dragged over rough surfaces. This may cause cracks or holes in dock.
- The deck surface may be washed using soap and water.
- The deck may become somewhat wavy as a result of the expansion of the plastic in the heat of the sun. This will not negatively affect the strength of the dock.

Failure to follow instructions may result in personal injury and may invalidate the applicable warranty.