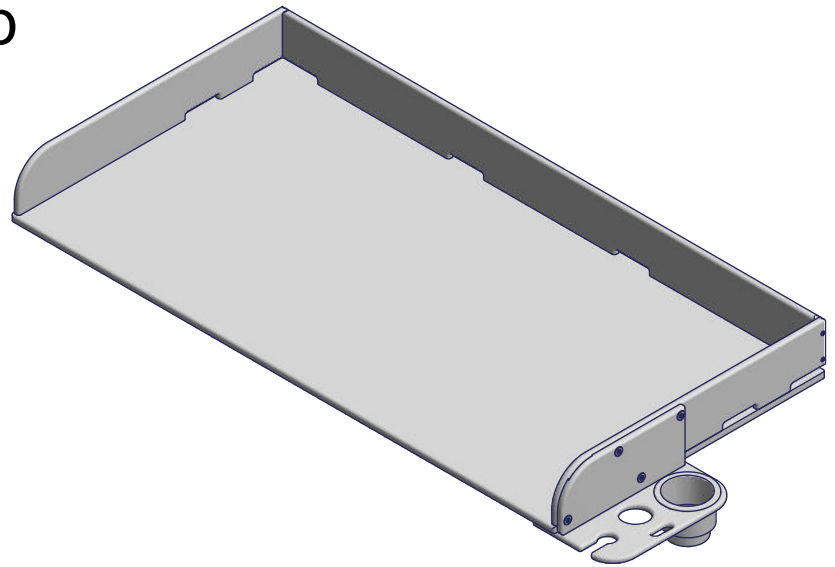


## Fish Cleaning Table Top

### Instructions

Part #: 1027131

Parts List			
ITEM	QTY	PART NUMBER	DESCRIPTION
1	1	1027571	Table Top Base
2	1	1027572	Table Top Side Left
3	1	1027574	Table Top Back
4	21	1027132	#8 x 1.5 Phillips Screw SS
5	1	1027576	Table Top Tool Holder
6	11	1027133	#8 x 1.0 Phillips Screw SS
7	1	1027575	Table Top Knife Holder
8	1	1001766	Cup Holder White
9	1	1027573	Table Top Side Right
10	11	1002574	Washer Flat 1/4 SS



Failure to follow instructions may result in personal injury and may invalidate the applicable warranty.

**Step 1.** Determine which faces of the table top base is the top front sides. There is one rounded edge that is the top front edge. Secure the left side to the table top using three #8 x 1-1/2 phillips screws from the bottom. Do the same to the right side.

**Note:** Do not over tighten screws, they can easily strip out the plastic. All holes are predrilled for easy assembly. The right side will have four 1/8" holes on one side that are to be used to secure the knife holder.

**Step 2.** Secure the back to the table top using five #8 x 1-1/2 phillips screws. Secure the sides to the back using two #8 x 1-1/2 phillips screws on each side.

**Step 3.** Secure the knife holder to the right side using four #8 x 1.0 phillips screws and four 1/4 flat washers as shown. Be careful not to tighten the screws through the plastic.

**Step 4.** Secure the tool holder to the bottom side of the table top using seven #8 x 1.0 phillips screws and 1/4 flat washers. Be careful not to tighten the screws through the plastic on the table top base. Insert the cup holder into the largest hole of the tool holder.

**Step 5.** Place table top onto the fish cleaning table frame. Use six #8 x 1-1/2 phillips screws to secure the table top assembly to the frame through the predrilled holes in the frame and plastic.

**⚠ WARNING** Be sure to remove fillet knife and any other tools from the table top before folding the table down. Not doing so may cause injury from falling tools.

