

Fish Cleaning Table

Instructions

Part #: 1026647

Parts List			
ITEM	QTY	PART NUMBER	DESCRIPTION
1	2	1026654	Wdmt Table Rear Leg
2	1	1026648	Wdmt Fish Cleaning Table Top
3	6	1000986	Cap Press-In 1.125 x 1.625 Silver W/Logo
4	1	1026652	Wdmt Table Front Leg Right
5	2	1026658	Prt Tube 1.125 x 1.625 x .125 x 22.75 Drilled
6	1	1026657	Wdmt Table Front Leg Base
7	2	1001803	Nut Hex 3/8-16 Brass
8	4	1001805	Nut Nyloc 3/8-16 Brass
9	2	1001802	Nut Flange 3/8-16 Brass
10	2	1000876	T Handle 3/8-16 x 1.5x2.5 w/ Cup Point
11	8	1002599	Washer Flat 3/8 SS
12	2	1002429	Bolt Hex 3/8-16 x 2.25 SS 304
13	4	1002431	Bolt Hex 3/8-16 x 2.75 SS 304
14	2	1002600	Pin-J 3/8 X 3-29/32 SS 304
15	2	1002278	Hair Pin Keeper #10 SS
16	1	1026707	Wdmt Table Front Leg Left
17	1	1027131	Table Top Assembly

Failure to follow instructions may result in personal injury and may invalidate the applicable warranty.

Step 1. Attach the 22.75" drilled tubes (item 5) to the front leg base using a 3/8 x 2-1/4 hex bolt and 3/8 flange nut in each place as shown.

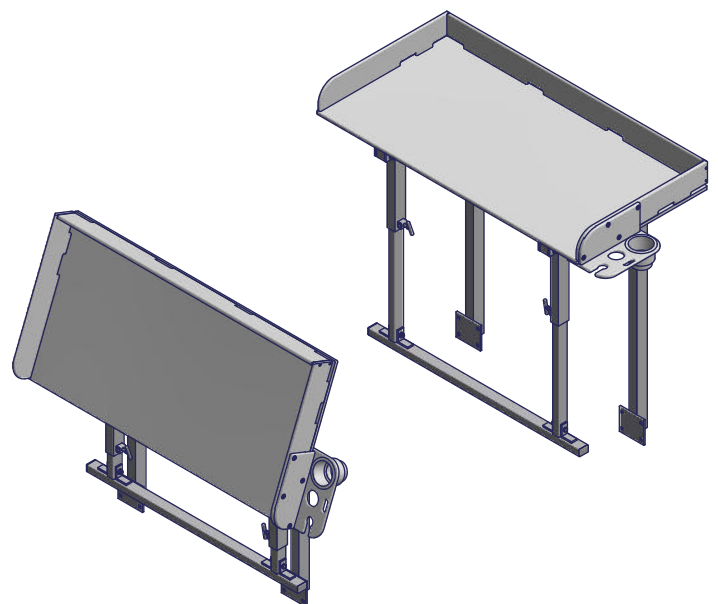
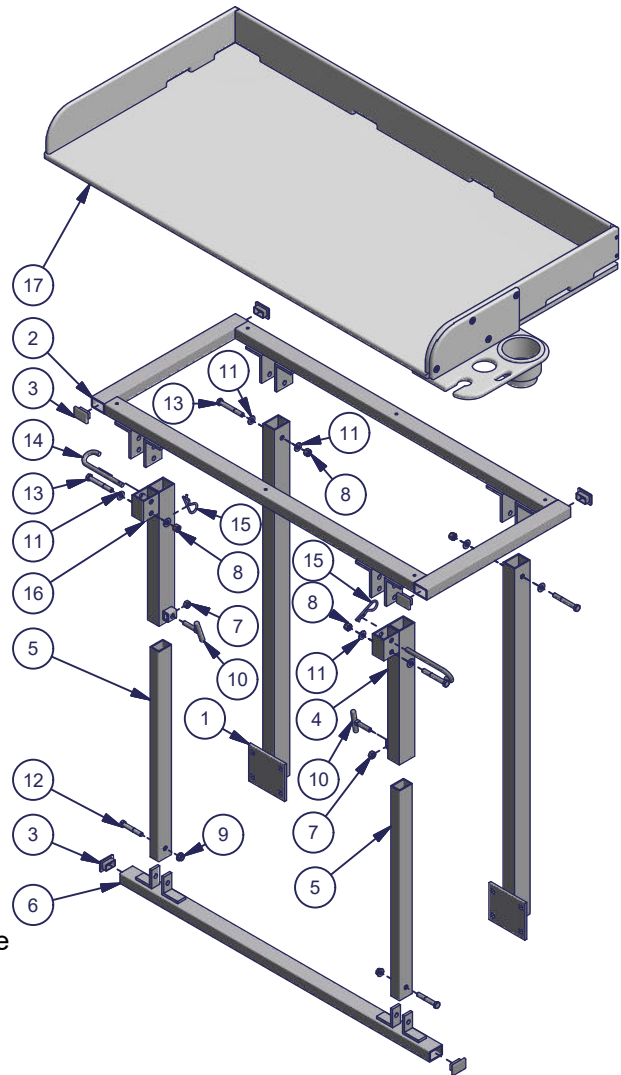
Step 2. Attach the right and left legs to the table top. Insert the legs between the angles on the bottom of the table top. Line up the two holes in the legs with the two holes in the angles. Insert a 3/8 x 2-3/4 hex bolt through the bottom hole in each leg with a 3/8 flat washer on each side and 3/8 nyloc nut. Leave loose enough to the leg swings easily from the table top. Insert a J-pin through the top holes in each leg and secure pin with the pin keeper.

Note: The nut clip on the bottom of the leg should face inside and the drilled tube of the leg should be toward the outside as shown.

Step 3. Insert a 3/8 hex nut into the nut clip on the bottom part of the legs. Lightly thread a t-handle into each nut on the legs just enough to stay in place and still allow the lower assembly to slide freely.

Step 4. Attach the rear legs to the connectors (sold separately). Place connectors onto dock, leave loose and adjust to fit in between corresponding angles on bottom of table top. Connect rear legs to table top using a 3/8 x 2-3/4 hex bolt, two washers, and a 3/8 nyloc nut. Leave loose enough to allow table top to swing freely on rear legs. Tighten connectors onto dock. Adjust lower legs to dock decking and tighten t-handles.

Note: To fold table up, take out the J-pins and loosen t-handles.



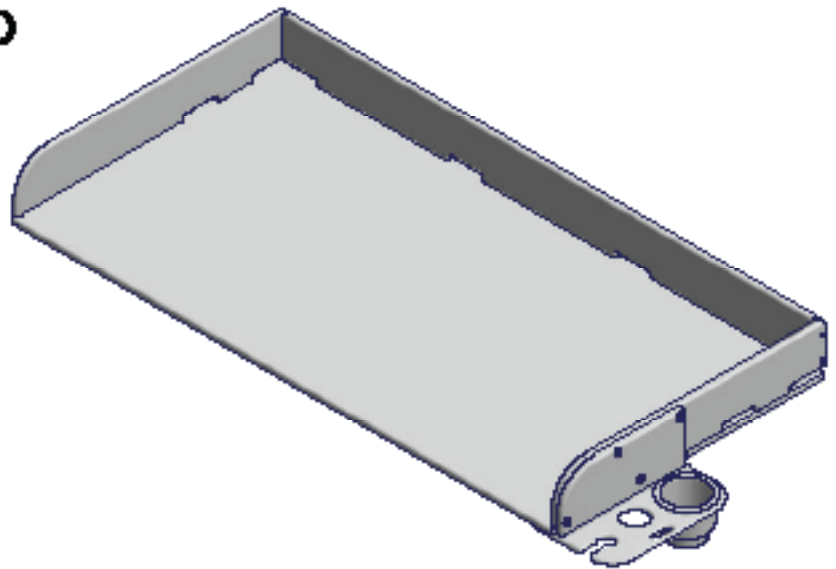
DOCK ACCESSORIES

Fish Cleaning Table Top

Instructions

Part #: 1027131

Parts List			
ITEM	QTY	PART NUMBER	DESCRIPTION
1	1	1027571	Table Top Base
2	1	1027572	Table Top Blade Left
3	1	1027574	Table Top Back
4	21	1027132	#8 x 1.5 Phillips Screw BB
5	1	1027576	Table Top Tool Holder
6	11	1027133	#8 x 1.0 Phillips Screw BB
7	1	1027575	Table Top Knife Holder
8	1	1001766	Cup Holder-Midline
9	1	1027573	Table Top Blade Right
10	11	1002574	Washer Flat 1/4" BB



Failure to follow instructions may result in personal injury and may invalidate the applicable warranty.

Step 1. Determine which faces of the table top base is the top front sides. There is one rounded edge that is the top front edge. Secure the left side to the table top using three #8 x 1-1/2 phillips screws from the bottom. Do the same to the right side.

Note: Do not over tighten screws, they can easily strip out the plastic. All holes are predrilled for easy assembly. The right side will have four 1/8" holes on one side that are to be used to secure the knife holder.

Step 2. Secure the back to the table top using five #8 x 1-1/2 phillips screws. Secure the sides to the back using two #8 x 1-1/2 phillips screws on each side.

Step 3. Secure the knife holder to the right side using four #8 x 1.0 phillips screws and four 1/4 flat washers as shown. Be careful not to tighten the screws through the plastic.

Step 4. Secure the tool holder to the bottom side of the table top using seven #8 x 1.0 phillips screws and 1/4 flat washers. Be careful not to tighten the screws through the plastic on the table top base. Insert the cup holder into the largest hole of the tool holder.

Step 5. Place table top onto the fish cleaning table frame. Use six #8 x 1-1/2 phillips screws to secure the table top assembly to the frame through the predrilled holes in the frame and plastic.

⚠ WARNING Be sure to remove fillet knife and any other tools from the table top before folding the table down. Not doing so may cause injury from falling tools.

