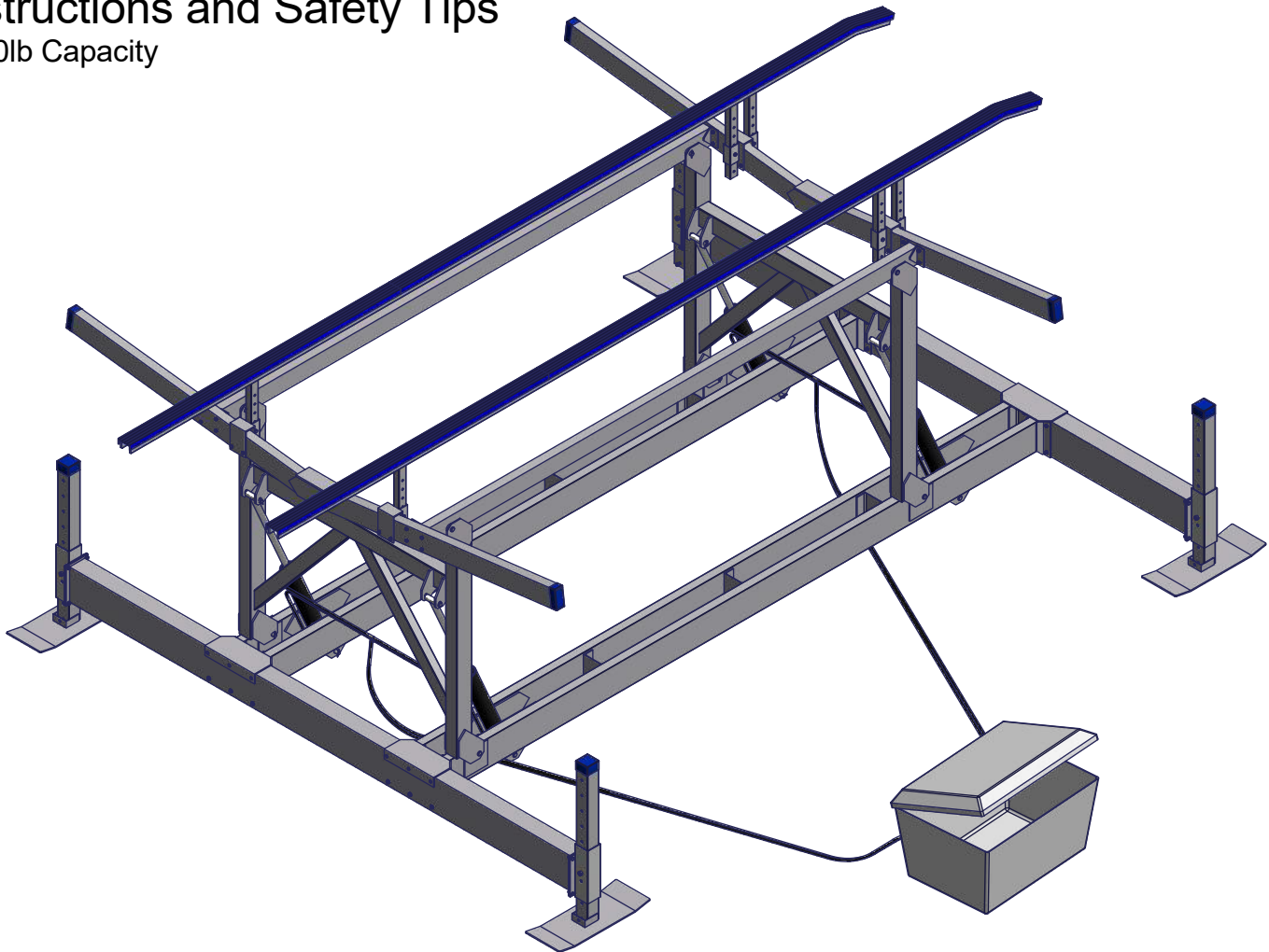


HYDRAULIC BOAT LIFTS

Hydraulic Lift

Instructions and Safety Tips

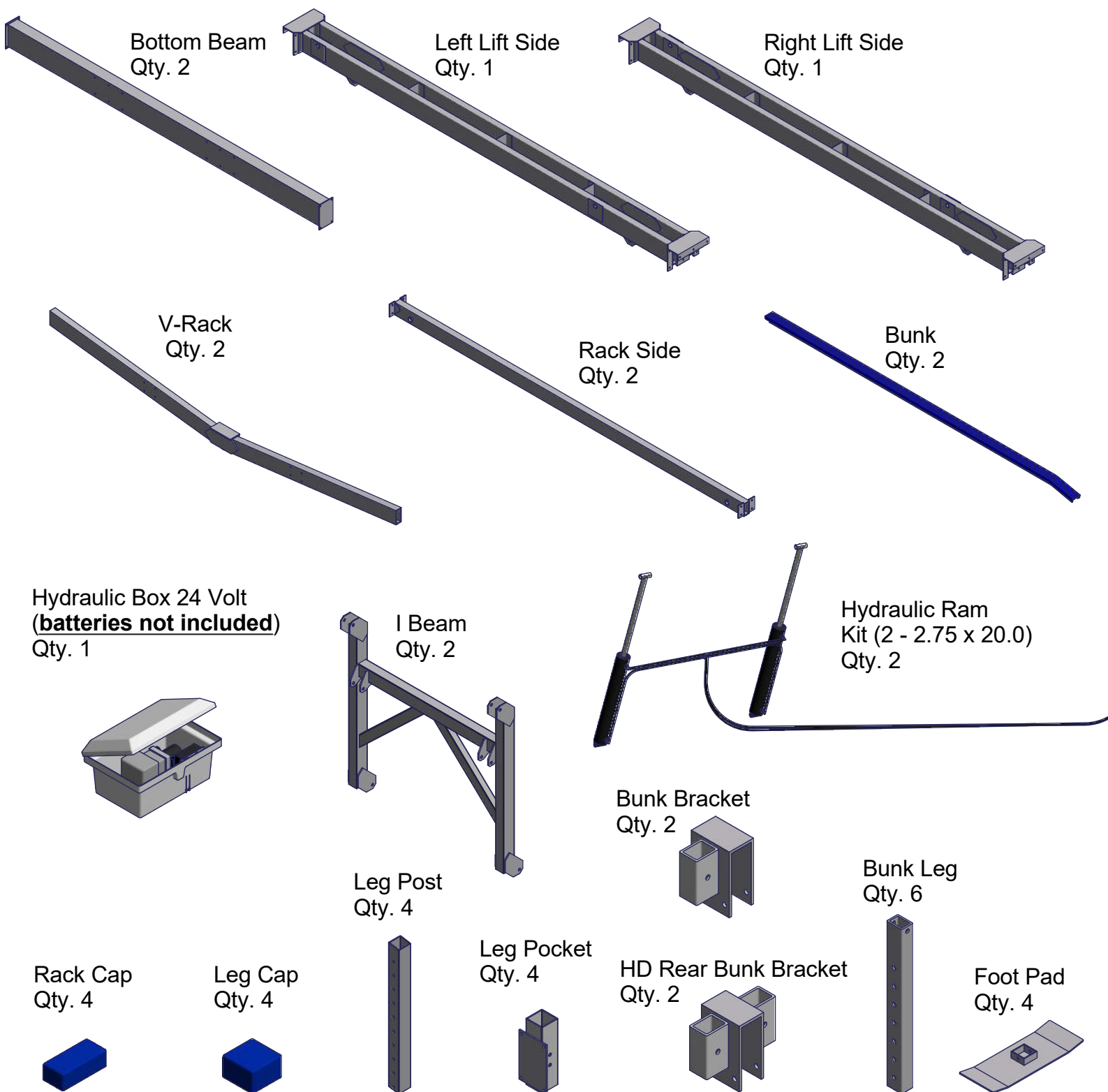
8000lb Capacity



⚠ WARNING - PUT SAFETY FIRST

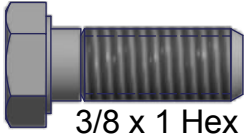
1. NOT COMPLYING WITH THE PROCEDURES AND PRECAUTIONS OUTLINED IN THIS MANUAL MAY RESULT IN PERSONAL INJURY OR DEATH AND WILL INVALIDATE THE WARRANTY.
2. Before attempting to install or operate this hoist, study and fully understand the proper operating procedures and safety precautions outlined in this owner's manual.
3. Never exceed the recommended weight capacity of your lift. The lifted weight will include hull, engine, fuel, battery, added accessories or gear, and rain water or any other materials inside of the boat. Weigh your fully loaded boat at a certified scale to be absolutely sure of the total weight.
4. To avoid injury or death do not allow anyone on, in, or under the lift while operating.
5. If you have any questions about assembly, installation, operation or suitability of this product, contact an authorized dealer or ShoreMaster directly.

Parts List



HYDRAULIC BOAT LIFTS

Fasteners and Hardware



3/8 x 1 Hex Bolt
Qty. 16



3/8 x 2-3/4 Hex Bolt
Qty. 16



3/8 x 4 Hex Bolt
Qty. 4



1/2 x 4 Hex Bolt
Qty. 4



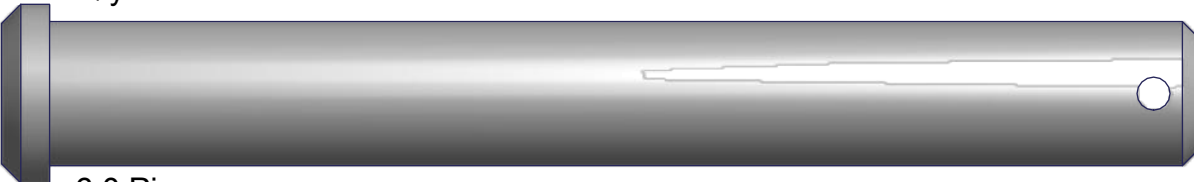
3/8 x 5 Hex Bolt
Qty. 24



4.0 Pin
Qty. 4



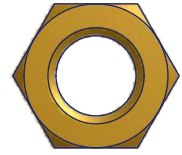
4-1/2 Pin
Qty. 8



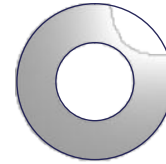
6.0 Pin
Qty. 4



3/8 Brass Nut
Qty. 60



1/2 Brass Nut
Qty. 4



3/8 Flat Washers
Qty. 12

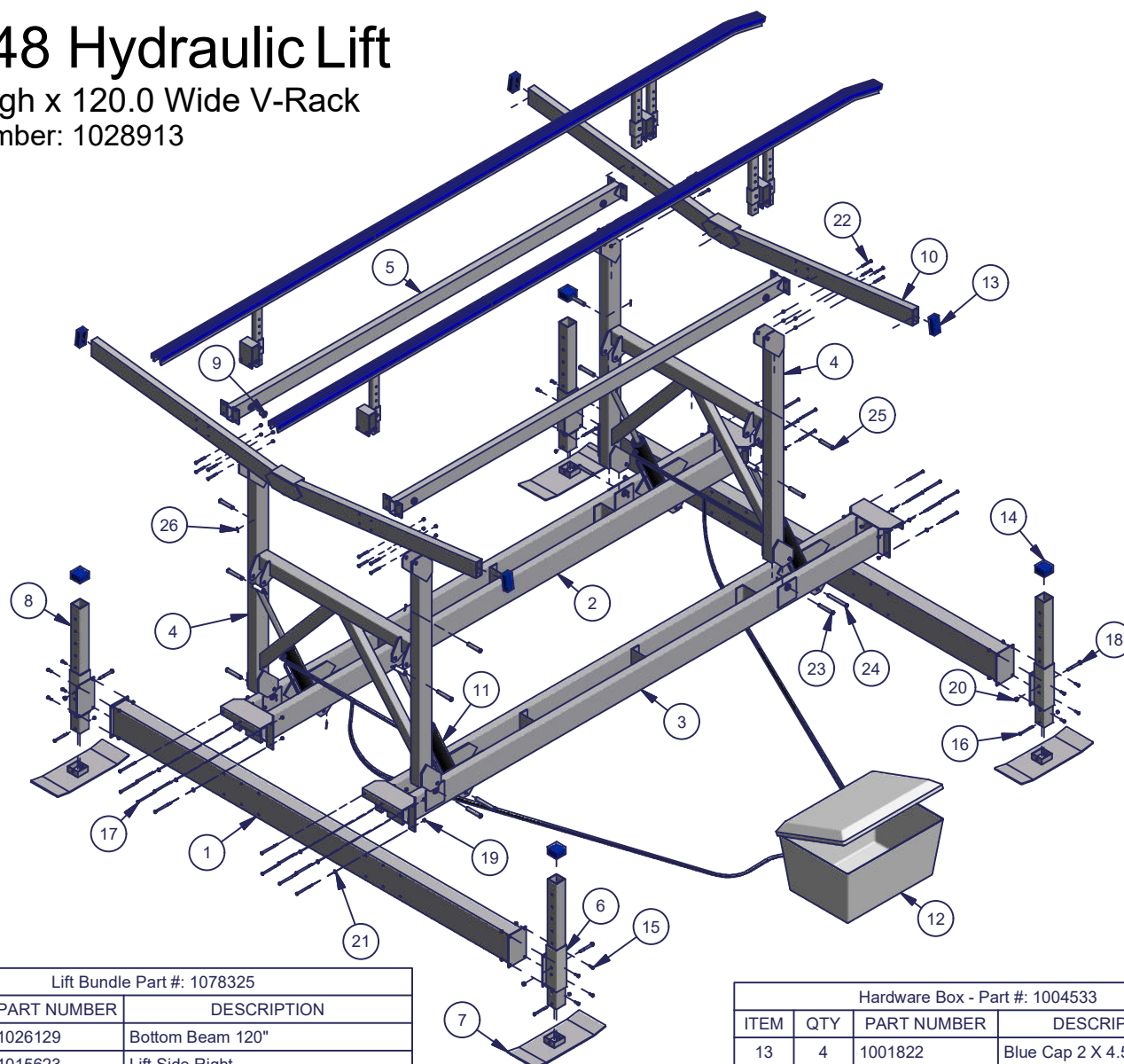


5/32 x 1-1/2 Cotter Pin
Qty. 16

81048 Hydraulic Lift

48.0 High x 120.0 Wide V-Rack

Part Number: 1028913



Lift Bundle Part #: 1078325			
ITEM	QTY	PART NUMBER	DESCRIPTION
1	2	1026129	Bottom Beam 120"
2	1	1015623	Lift Side Right
3	1	1015624	Lift Side Left
4	2	1015625	I Beam 48"
5	2	1003603	Rack Side
6	4	1003605	Leg Pocket
7	4	1007409	Foot Pad
8	4	1004744	Leg Post
9	16	1001799	Bushing
10	2	1028832	Wdmt V Rack 120.0 - 8000 Hydraulic

Hydraulic Components Part #'s			
ITEM	QTY	PART NUMBER	DESCRIPTION
11	2	1038501	Hydraulic Ram Kit (2 - 2.75 x 20.0)
12	1	1078336	Hydraulic Pump - Set @ 2300 psi

Hardware Box - Part #: 1004533			
ITEM	QTY	PART NUMBER	DESCRIPTION
13	4	1001822	Blue Cap 2 X 4.5 X 1.5
14	4	1001034	Blue Cap 3 X 3
-	1	1000432	Bolt Bag
15	16	1002419	Bolt 3/8 x 1.0
16	4	1002438	Bolt 3/8 x 4.0
17	24	1002444	Bolt 3/8 x 5.0
18	4	1002384	Bolt 1/2 X 4.0
19	60	1001802	Flange Nut 3/8
20	4	1001792	Nut 1/2
21	12	1002599	Washer Flat 3/8
22	16	1002431	Bolt 3/8 x 2.75
-	1	1004385	Hardware Bag - Pins
23	8	1002645	Pin 4.5
24	4	1000434	Pin 6.0
25	4	1002644	Pin 4.0
26	16	1023968	Pin Cotter 5/32 x 1.5
-	4	1024433	5/8" OD Hose Clamp
-	4	1014201	#12 x 3/4 Self Drilling Screw

*1004421 - Hardware Box Heavy Duty Full Length Bunk (Pair)

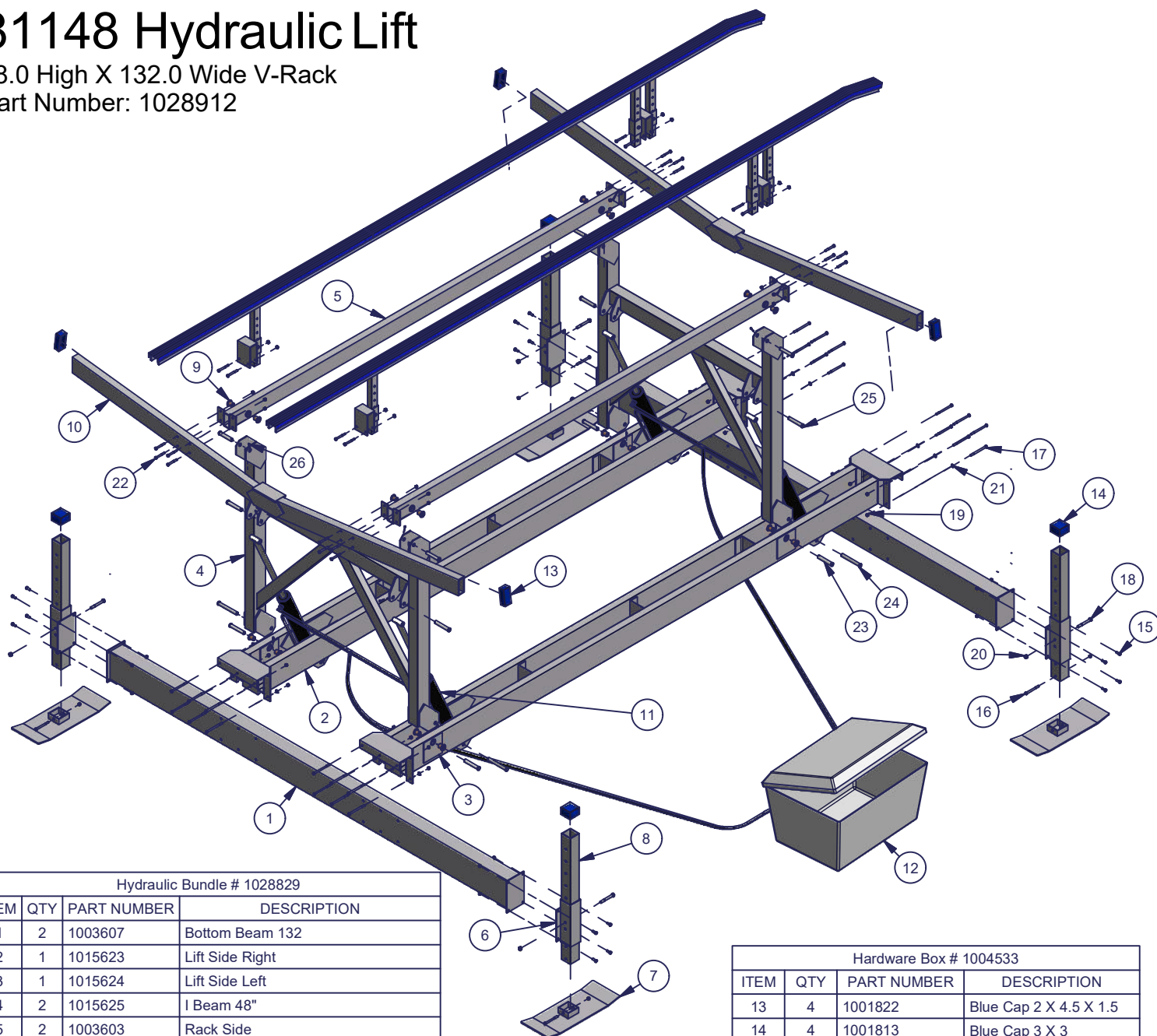
*1014139 - Heavy Duty Full Length Bunk Bundle

HYDRAULIC BOAT LIFTS

81148 Hydraulic Lift

48.0 High X 132.0 Wide V-Rack

Part Number: 1028912



Hydraulic Bundle # 1028829

ITEM	QTY	PART NUMBER	DESCRIPTION
1	2	1003607	Bottom Beam 132
2	1	1015623	Lift Side Right
3	1	1015624	Lift Side Left
4	2	1015625	I Beam 48"
5	2	1003603	Rack Side
6	4	1003605	Leg Pocket
7	4	1007409	Foot Pad
8	4	1004744	Leg Post
9	16	1001799	Bushing
10	2	1026383	Wdmt V Rack 132.0 - 8000 Hydraulic

Hydraulic Components Part #'s

ITEM	QTY	PART NUMBER	DESCRIPTION
11	2	1025996	Hydraulic Ram Kit (2 - 2.75 x 20.0)
12	1	1028518	Hydraulic Box - Fiberglass
-	1	1024839	Fiberglass Box
-	1	1028284	Pump & Remote Cradle
-	1	1028506	Hydraulic Pump - Set @ 2300 psi
-	1	1028200	Remote Box w/ Remote

Hardware Box # 1004533

ITEM	QTY	PART NUMBER	DESCRIPTION
13	4	1001822	Blue Cap 2 X 4.5 X 1.5
14	4	1001813	Blue Cap 3 X 3
15	16	1002419	Bolt 3/8 x 1.0
16	4	1002438	Bolt 3/8 x 4.0
17	24	1002444	Bolt 3/8 x 5.0
18	4	1002384	Bolt 1/2 X 4.0
19	60	1001803	Nut 3/8
20	4	1001792	Nut 1/2
21	12	1002599	Washer Flat 3/8
22	16	1002431	Bolt 3/8 x 2.75
23	8	1002645	Pin 4.5
24	4	1000434	Pin 6.0
25	4	1002644	Pin 4.0
26	16	1002609	Pin Cotter 5/32 x 1.0

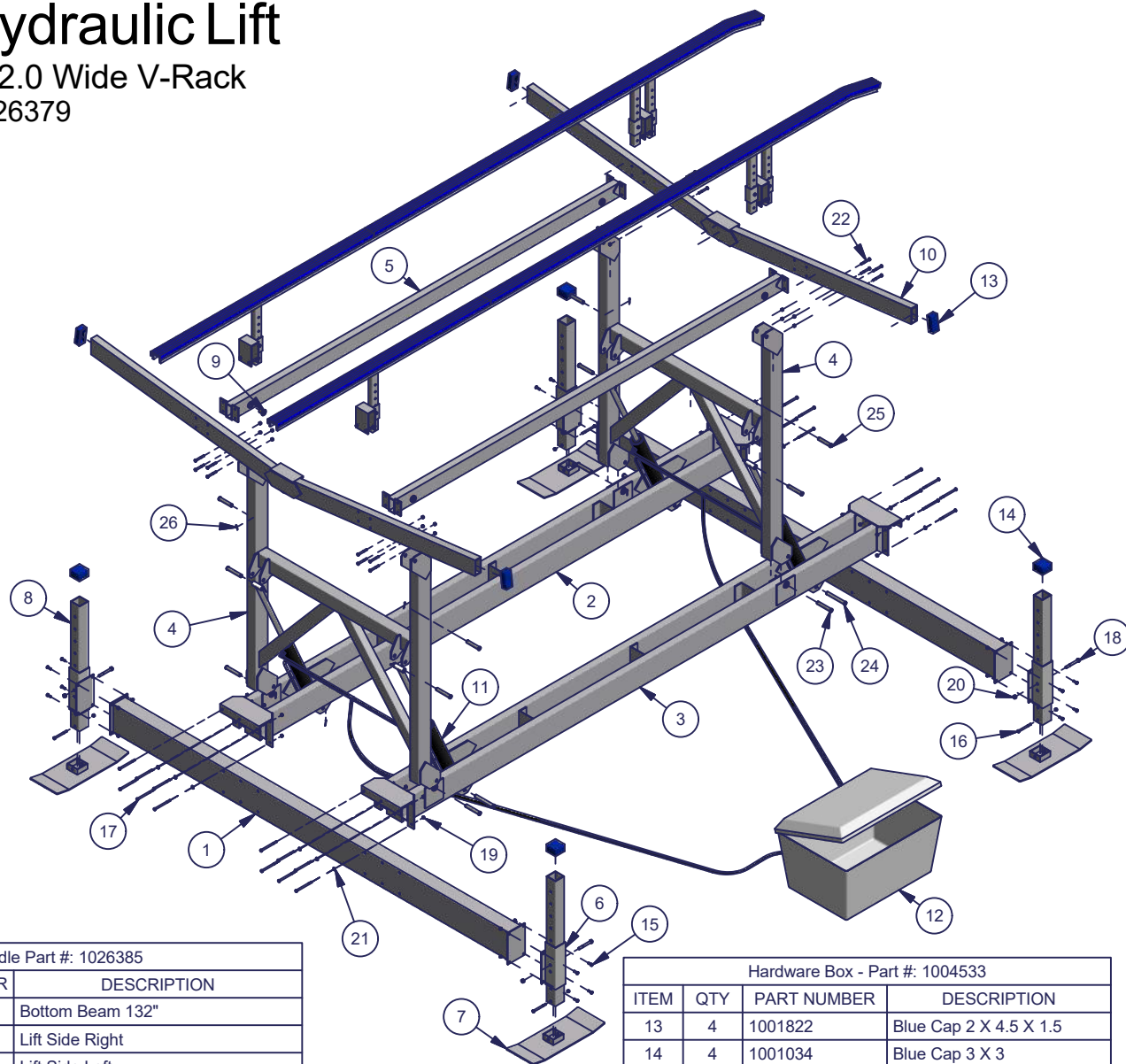
*1004421 - Hardware Box Heavy Duty Full Length Bunk (Pair)

*1014139 - Heavy Duty Full Length Bunk Bundle

81160 Hydraulic Lift

60.0 High x 132.0 Wide V-Rack

Part Number: 1026379



Lift Bundle Part #: 1026385

ITEM	QTY	PART NUMBER	DESCRIPTION
1	2	1003607	Bottom Beam 132"
2	1	1015623	Lift Side Right
3	1	1015624	Lift Side Left
4	2	1015630	I Beam 60"
5	2	1003603	Rack Side
6	4	1003605	Leg Pocket
7	4	1007409	Foot Pad
8	4	1004744	Leg Post
9	16	1001799	Bushing
10	2	1026383	Wdmt V Rack 132.0 - 8000 Hydraulic

Hydraulic Components Part #'s

ITEM	QTY	PART NUMBER	DESCRIPTION
11	2	1025996	Hydraulic Ram Kit (2 - 2.75 x 20.0)
12	1	1028514	Hydraulic Box - Fiberglass
-	1	1024839	Fiberglass Box
-	1	1028284	Pump & Remote Cradle
-	1	1028506	Hydraulic Pump - Set @ 2500 psi
-	1	1028200	Remote Box w/ Remote

Hardware Box - Part #: 1004533

ITEM	QTY	PART NUMBER	DESCRIPTION
13	4	1001822	Blue Cap 2 X 4.5 X 1.5
14	4	1001034	Blue Cap 3 X 3
-	1	1000432	Bolt Bag
15	16	1002419	Bolt 3/8 x 1.0
16	4	1002438	Bolt 3/8 x 4.0
17	24	1002444	Bolt 3/8 x 5.0
18	4	1002384	Bolt 1/2 X 4.0
19	60	1001802	Flange Nut 3/8
20	4	1001792	Nut 1/2
21	12	1002599	Washer Flat 3/8
22	16	1002431	Bolt 3/8 x 2.75
-	1	1004385	Hardware Bag - Pins
23	8	1002645	Pin 4.5
24	4	1000434	Pin 6.0
25	4	1002644	Pin 4.0
26	16	1023968	Pin Cotter 5/32 x 1.5
-	4	1024433	5/8" OD Hose Clamp
-	4	1014201	#12 x 3/4 Self Drilling Screw

*1004421 - Hardware Box Heavy Duty Full Length Bunk (Pair)

*1014139 - Heavy Duty Full Length Bunk Bundle

HYDRAULIC BOAT LIFTS

ASSEMBLY INSTRUCTIONS

⚠ WARNING - PUT SAFETY FIRST

NOT COMPLYING WITH THE PROCEDURES AND PRECAUTIONS OUTLINED IN THIS MANUAL MAY RESULT IN PERSONAL INJURY OR DEATH AND WILL INVALIDATE THE WARRANTY.

Your safety is the most important issue related to this product.

- Fully read and understand each step before proceeding with that step.
- Wear protective gloves, clothing and eyewear when assembling and installing the lift.
- Do not assemble, install or use this product if items are missing or damaged.

For ease of assembly find a flat area with plenty of room to assemble lift. The following tools will be needed for assembling lift:

1. Two 9/16" Wrenches
2. Two 3/4" Wrenches
3. Measuring Tape
4. Hammer
5. Needle Nose Pliers (for Cotter Pins)

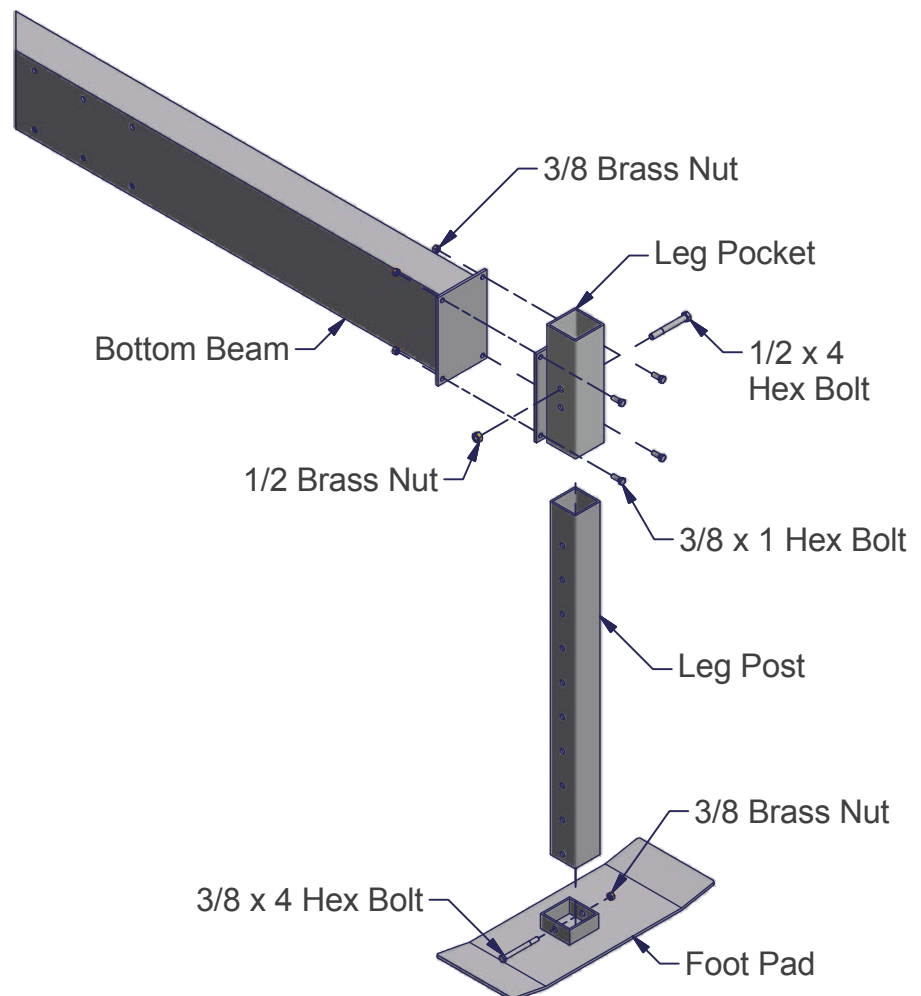
STEP 1

Insert all four Leg Posts into Foot Pads, secure using one 3/8 x 4 Hex Bolt and one 3/8 Brass Nut each place - as shown.

Insert all four Leg Posts into Leg Pockets. At the desired height insert one 1/2 x 4 Hex Bolt and secure with one 1/2 Brass Nut in each place - as shown.

Note: The leg height should be set at a constant height for all four legs. The final height will be determined during the installation phase. When installing lift in shallow water (30" or less) Leg Pockets should point up - as shown. If in deep water (30" or deeper) Leg Pockets should point downward.

Attach one Leg Pocket to Bottom Beam in four places using four 3/8 x 1 Hex Bolts and four 3/8 Brass Nuts - as shown.

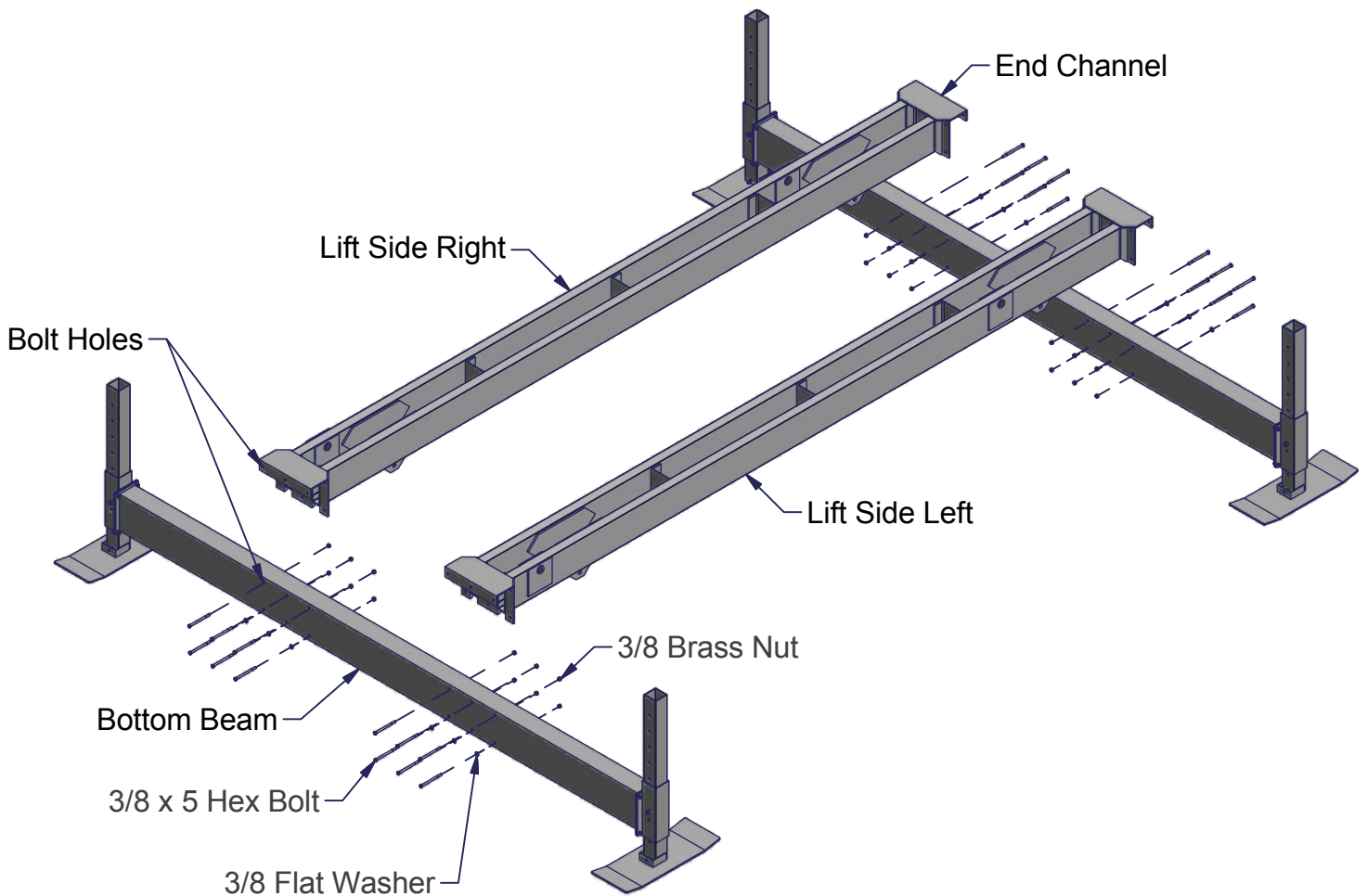


STEP 2

Slide the Lift Side Left and Lift Side Right End Channels on to the Bottom Beams. Position them so that Bolt Holes line up. Secure each Lift Side to one Bottom Beam with six 3/8 x 5 hex bolts, three 3/8 flat washers, and six 3/8 brass nuts at each connection - as shown.

Note: Be sure Lift Sides are positioned with I Beam Holes facing out.

Note: 3/8 flat washers are used on bottom bolts, on the bolt head side only (as shown).



HYDRAULIC BOAT LIFTS

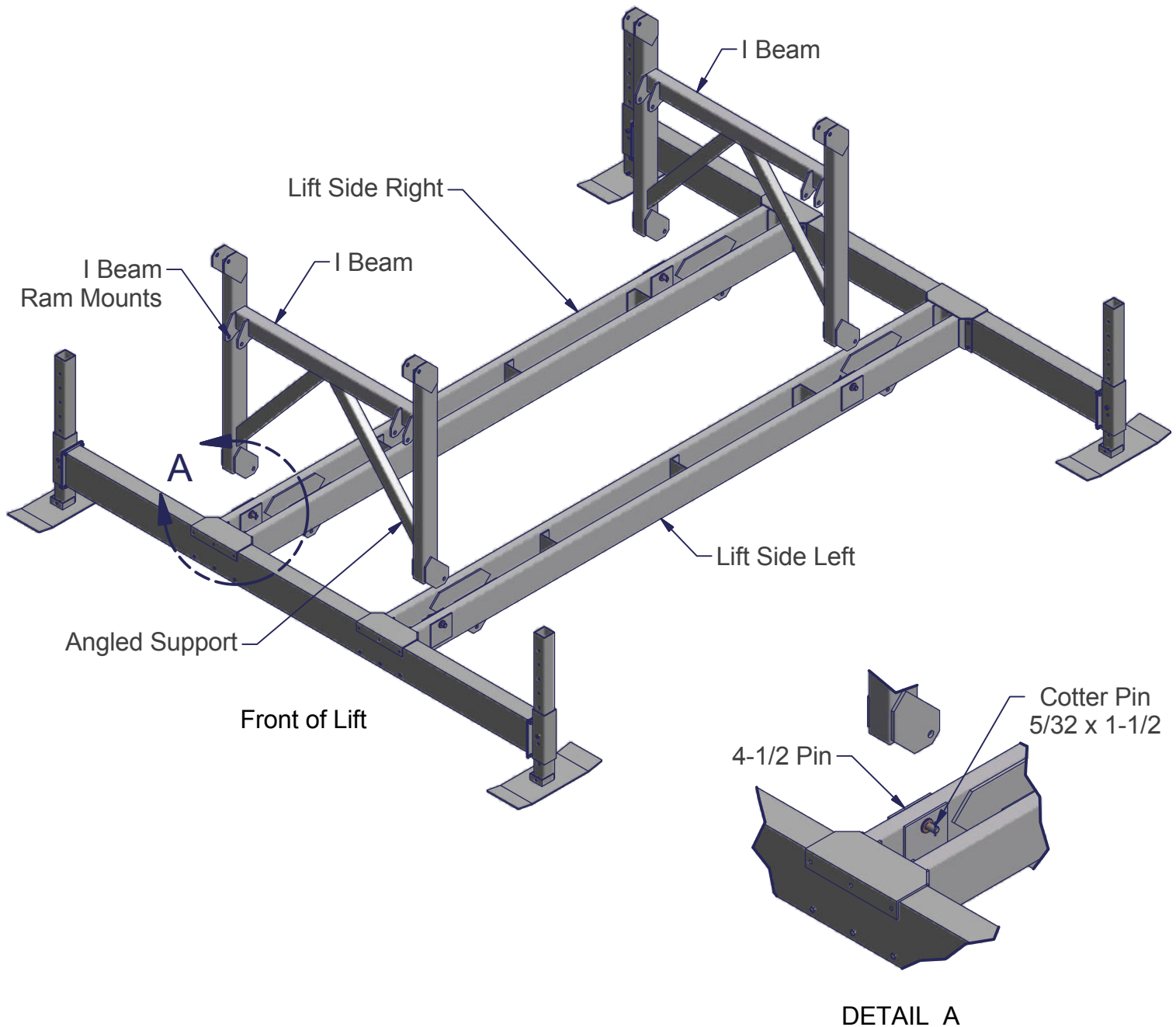
STEP 3

Attach the I Beams to the proper Lift Sides as shown, using two 4-1/2 Pins for each I Beam. Insert one 5/32 x 1-1/2 Cotter Pin into each pin and bend with needle nose pliers.

Note: The Angled Support of the I Beams should be positioned facing down. I Beam Ram Mounts should face front of lift - as shown.

Tip: When inserting pins use hammer to tap pin in place if necessary.

Note: Be sure that all I Beam Connections on the Lift Sides have Bushings in them - as shown in "Detail A."



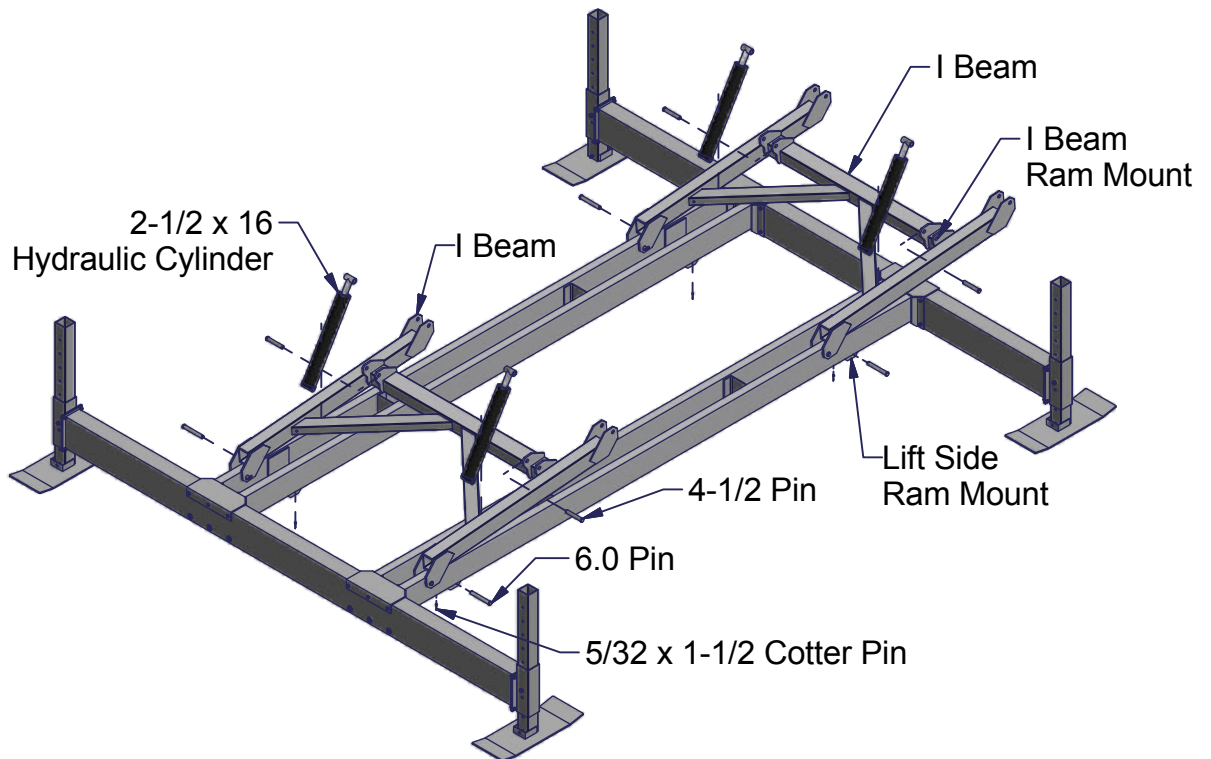
STEP 4

Pin the base of each 2-1/2 x 16 Hydraulic Cylinder to the Lift Side Ram Mounts using one 6.0 Pin and one 5/32 x 1-1/2 Cotter Pin in four places - as shown. Bend cotter pins with needle nose pliers after installed.

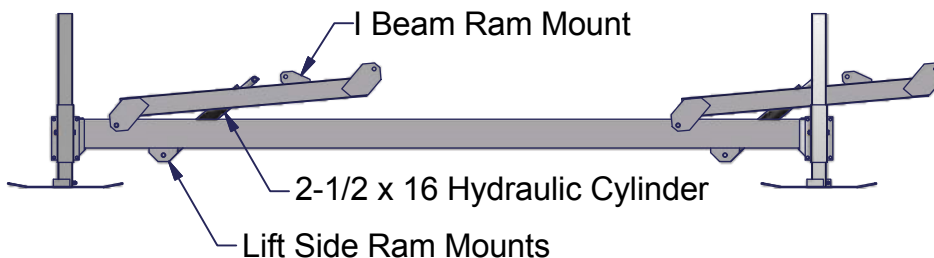
Note: Each 2-1/2 x 16 Hydraulic Cylinder has two fittings that connect the hose to the ram. These fittings should be facing up when positioning ram on the lift.

Pin the top of each 2-1/2 x 16 Hydraulic Cylinder to the I Beam Ram Mounts using one 4-1/2 Pin and one 5/32 x 1-1/2 Cotter Pin in four places - as shown. Bend cotter pins with needle nose pliers after installed.

Note: Do not remove plastic ties on hoses. After Hydraulic Cylinders have been installed make sure hoses are positioned under lift sides and in a location where they will not get pinched or cut by moving parts. Use caution to avoid scratching paint on Hydraulic Cylinders.



SIDE VIEW



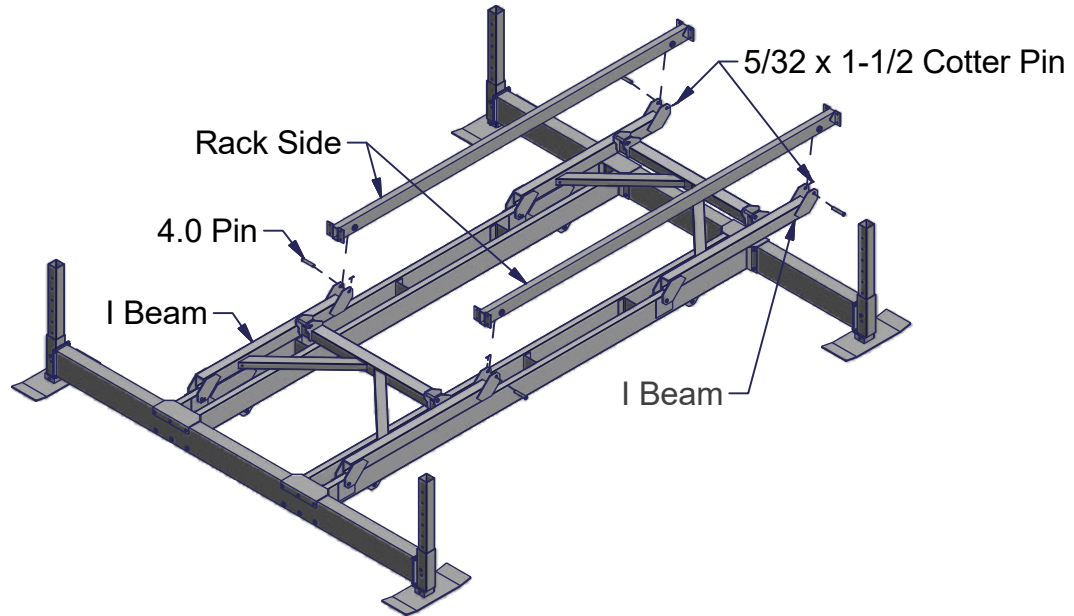
HYDRAULIC BOAT LIFTS

STEP 5

Attach each Rack Side to I Beams using two 4.0 Pins and two 5/32 x 1-1/2 Cotter Pins - as shown. Bend cotter pins with needle nose pliers after inserted.

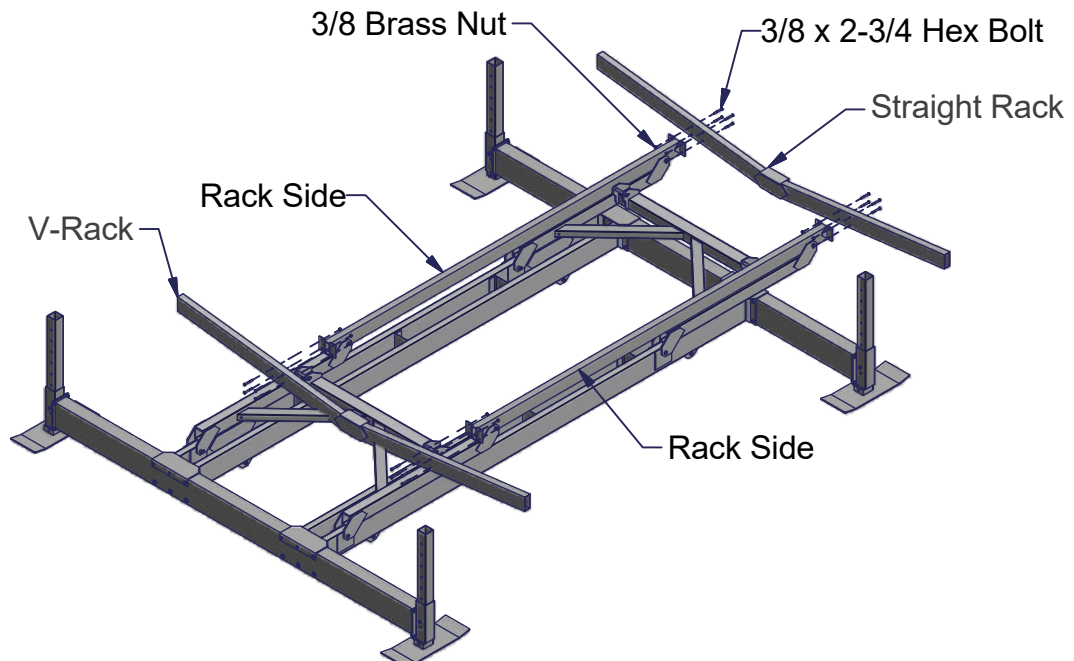
Note: The Rack Sides have drain holes in them. Be sure the drain holes face down.

Note: Heads of pins should face to the outside of the lift.



STEP 6

Attach each V-Rack to Rack Sides. Secure with eight 3/8 x 2-3/4 Hex Bolts and eight 3/8 Brass Nuts - as shown.

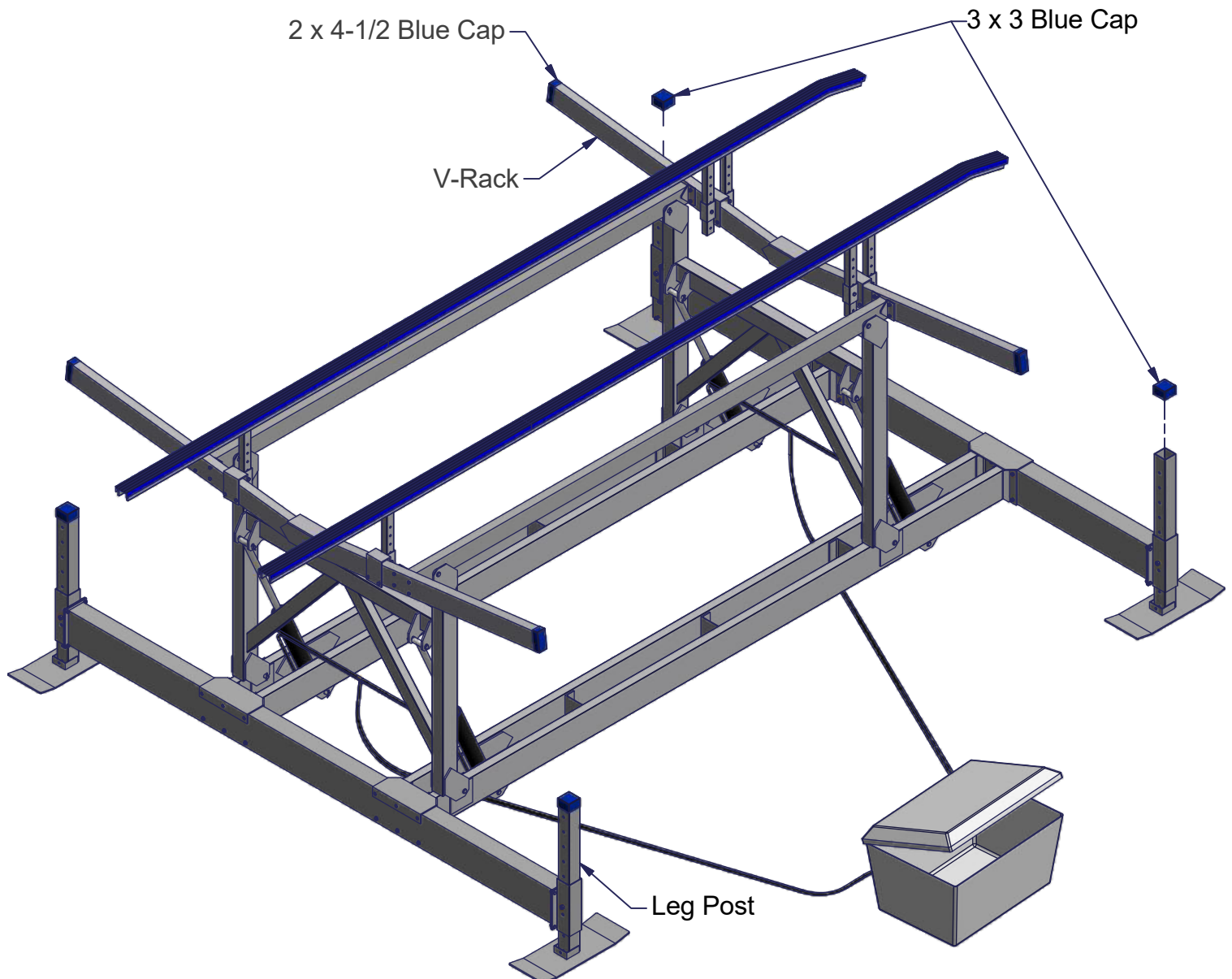


STEP 7

Insert one 3 x 3 Blue Cap over each Leg Post in four places - as shown.

Insert one 2 x 4-1/2 Blue Cap over each end of the V-Racks in four Places - as shown.

Note: Attach the bunk brackets to the v-racks, then insert the bunk legs into the bunk brackets and attach the bunks to the bunk legs. (See bunk instructions for complete instructions on bunk attachment.)



Installation Instructions

⚠ WARNING NOT COMPLYING WITH THE PROCEDURES AND PRECAUTIONS OUTLINED IN THIS MANUAL MAY RESULT IN PERSONAL INJURY OR DEATH AND WILL INVALIDATE THE WARRANTY. Do not under any circumstances, endanger yourself or risk damage to your lift or boat when installing.

-Situations will widely vary between installation sites. ShoreMaster recommends that your dealer, or other trained boat lift installer, train you and perform the initial installation.

-To protect your skin and eyes always wear leather gloves, clothing and safety glasses when assembling and installing the lift.

-Do not assemble, install or use this product if items are missing or damaged.

The following are guidelines or suggestions for installation.

STEP 1

Measure the water depth of the position you want to locate the lift. Measurements should be taken at both the projected position of the end nearest shore and end furthest from shore.

STEP 2

Before installing, adjust lift legs so the boat can float into position before raising, while still allowing a high enough position so the boat can be fully raised up and out of the water.

STEP 3

Carefully place the lift into position alongside the dock so that the hydraulic pump and operating controls can easily be set on the dock. Ask your dealer about a wheel caddy unit to allow your lift to be rolled into position.

STEP 4

Lake and river bottoms can frequently be uneven. Ensure that your lift is level. Measure the distance from the top of the cross beam to the water surface. The distance at each of the four corners of the lift should be within two inches of each other. If they are not, adjust the legs accordingly.

Note: If the lift legs will extend 3 feet or more, ShoreMaster recommends deep water braces to stabilize and strengthen the lift. Ask your dealer for more information.

⚠ WARNING

To avoid personal injury or death the lift must be resting on the water bottom in a level, secure, and stable position for safe operation. An unstable lift installation could result in tipping of the lift during operation, causing damage to watercraft and a crushing or pinching injury to the operator or bystanders.


STEP 5

After loading and operating the lift proceed to the operating instructions, remove the boat, and recheck that the lift remains level.

Operating Instructions

WARNING

When first using the boat lift after installation, the weight of the boat may cause the lift to settle and become unbalanced. To avoid personal injury or death, make sure people are not inside, under, or in the immediate vicinity of the lift until you are certain the lift has stabilized.

 **WARNING** NOT COMPLYING WITH THE PROCEDURES AND PRECAUTIONS OUTLINED IN THIS MANUAL MAY RESULT IN PERSONAL INJURY OR DEATH AND WILL INVALIDATE THE WARRANTY. Do not under any circumstances, endanger yourself or risk damage to your lift or boat when installing.

Now that you have installed and leveled the lift, you are ready to raise your boat for the first time. Prior to use, see to it that anyone who may use the lift looks upon the unit not as a toy but a piece of heavy equipment that deserves your respect and good judgment.

- Before allowing anyone to operate the lift, be sure they fully understand the proper operating procedure.
- Do not exceed maximum capacity of the lift; overloading may cause mechanical failure and serious personal injury.
- Do not allow anyone who is in the water within 6 feet of the lift.
- Do not allow anyone on, in, or under the lift while operating.

When operating the lift, the following procedures must be adhered to:

STEP 1

Be sure the cradles or bunks (sold separately) are positioned below the water surface so they will not interfere with the boat floating into position.

STEP 2

Properly balance and center the boat on the lift prior to raising. The boat should be positioned with the center of gravity near the middle of the lift. For most rear engine mounted boats, this requires you to position the boat mostly forward in the lift.

STEP 3


Carefully bring the lift up until the bunks or cradles have secured the boat. Then, stop the lift and check to see that the bunks or cradles have automatically positioned themselves to the shape of the hull, as they are designed to do. If so, continue bringing the boat out of the water until it is about one foot above the surface. Stop the lift again and check the stability of the lift, particularly to see that it is fairly level and will not topple over. Finally, continue lifting the boat while paying close attention to the positioning of the lift until it is in the full upright and over center position.

STEP 4

After loading and operating the lift, remove the boat and recheck that the lift remains level. (See STEP 4 of the Installation Instructions on previous page). If the lift is not level, the legs should be adjusted accordingly. Because the lift may settle and become unbalanced, the lift levelness should be rechecked two weeks after installation and periodically as needed.

STEP 5

If the lift is located in an area where swimmers may dive into the water, make sure that they are warned of the lift's location when the boat is not present and the lift is hidden under the water. If you have a remote control device, raise the lift rack out of the water after departing to allow swimmers to see the location of the lift.

 **WARNING** To prevent serious personal injury or death, NEVER go under your boat when it is in the upright position. The lift is not intended as a maintenance platform. Always store your boat in the over center position. The over-center position will help prevent the boat from lowering if you experience a hydraulic leak or slippage.

Storage and Off-Season Suggestions

Be sure to prevent rainwater from accumulating in your boat if you plan to leave it on the lift for a long-term storage. Rainwater accumulating in your bilge can quickly increase your gross weight over the lift capacity.

1. At all times, make sure that you adjust the height of the lift to limit wave action against the hull. A moving boat as a result of wave action will damage the lift and can take the boat off the lift.
2. ShoreMaster recommends disconnecting the hydraulics box and storing it indoors for the winter, or if you are not planning on using the lift for prolonged periods. To do this, simply disconnect the hoses from your hydraulics box by using the *quick disconnects* and connect the hoses together. This will ensure that the connecting hardware will remain clean.

WARNING

To avoid personal injury or death, do not disconnect the hoses with the boat on the lift or the lift in the upright position. If the hoses are disconnected while the lift is in the upright position or with a boat on the lift, the lift may fall.

TIP: Do not disconnect the hoses when the lift is pressured against the upper or lower stops.

3. Booster-charge your battery using a 10-A charger at the beginning and end of the season. A mid-season boost may be required for heavy use. Prior to performing a booster charge, see the *Battery Tips Section* of the hydraulics box instructions (included with hydraulic box or available on the ShoreMaster website).
4. If your waterway freezes during the winter, you will need to remove your lift, as it will be damaged by ice flows.
5. When storing the boat, the lift must be in the upright over center gravity lock position for maximum safety. The over-center position will prevent the boat from lowering if you experience a hydraulic leak or slippage.
6. Your lift can be left in any position when not in use (without a boat on the lift), although we do recommend leaving the lift in the up position to prevent the bunks from becoming "slimy" and to avoid creating a hidden underwater obstruction.
7. Each spring and fall, inspect nuts and bolts for damage, wear, or loose connections. At the same time, inspect the frame and pivot points for unusual wear, damage, or bent parts. Tighten, repair, or replace parts as needed. ShoreMaster dealers usually offer service visits. Please contact your dealer if you are unable or unwilling to perform maintenance or service to the lift.