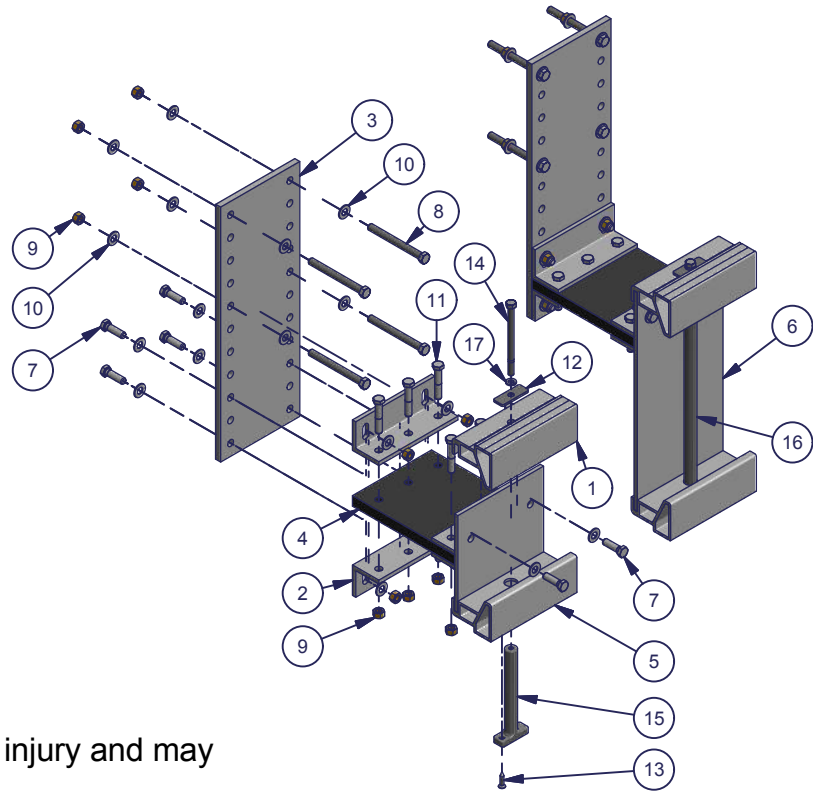


## ShorePort Side Mount Flex-Hinge

### Instructions

Part #: 1013365

Parts List			
ITEM	QTY	PART NUMBER	DESCRIPTION
1	2	1005729	Dock Poly Top Accessory Connector
2	6	1003236	ShorePort Flexi Hinge Slotted Angle
3	2	1003259	Shoreport Flexi-Hinge Assy Extension Plate
4	2	1001127	Rubber Conveyor Belting Plate 11/16" x 6" x 8"
5	1	1013367	ShorePort Side Mount Flexi-Hinge Weldment
6	1	1003814	ShorePort Flexi Hinge Weldment
--	1	1004578	Bolt Bag ShorePort Side Mount Flexi-Hinge
7	12	1002422	Bolt 3/8 - 16 X 1.250 SS
8	8	1002439	Bolt Hex 3/8-16 x 4.0 Full Thread SS 304
9	32	1001805	Nut 3/8 - 16 Nylock Brass
10	40	1002599	Washer Flat 3/8 SS
11	12	1002424	Bolt 3/8 - 16 X 2 SS
12	2	1001026	Washer Rectangular SS 1/8 x 2 x 3/4
13	2	1002566	Screw Oval #12 x 1.0 SS
14	2	1001025	Bolt Hex 5/16-18 x 4.5 Full Thread SS 304
15	1	1001098	Composite Connector Rod 5"
16	1	1007918	Poly Connector Rod 13.875 Composite
17	2	1002606	Washer Lock 5/16 SS

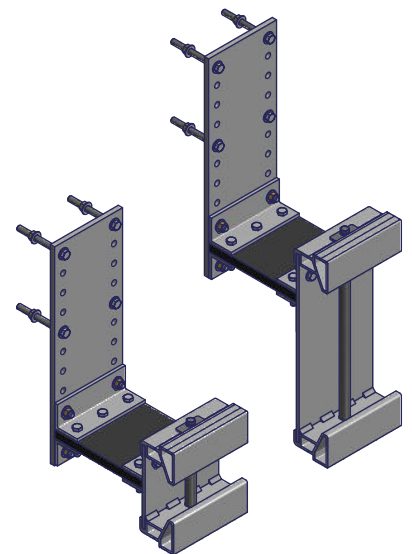


Failure to follow instructions may result in personal injury and may invalidate the applicable warranty.

**Step 1.** Slide connecting rod through hole in bottom of flexi hinge assembly weldment and attach using oval screw. Next insert 5/16 x 4-1/2" bolt through lock washer, rectangular washer and insert into hole in accessory top connector and thread into connector rod just enough to hold it together. Attach rubber plate to flexi hinge assembly weldment using one flexi hinge assembly angle, three 3/8 x 2 hex bolts and 3/8 nylock nuts. Attach two other flexi hinge assembly angles to other end of rubber plate using three 3/8 x 2 hex bolts and 3/8 nylock nuts (make sure to bolt through the holes, not the slots on the angles.) Attach assembled portion of hinge to front of ShorePort so the connecting rod will end up centered in a vertical groove of the ShorePort.

**Step 2.** Attach extension plate to dock using 3/8 x 4 hex bolts, 3/8 flat washers, and 3/8 nylock nuts. Space plates so they are equal with placement of hinge assembly from Step 1. Float ShorePort so that the hinge assembly from Step 1 lines up with the extension plate on the dock. Attach the hinge assembly to the extension plate using four 3/8 x 1-1/4 hex bolts, 3/8 flat washers, and 3/8 nylock nuts through the hinge assembly angles to the extension plate. Make sure ShorePort and rubber plates are level. Make adjustments to extension plate if needed.

**Note:** Smaller hinge assembly is to be used toward the back of the ShorePort, the larger hinge is to be used toward the front.



## ShorePort Side Mount Flexi-Hinge

### Instructions

Part #: 1013365

Failure to follow instructions may result in personal injury and may invalidate the applicable warranty.

**Note:** Refer to exploded parts drawing on following page for details on flexi hinge assembly.

**Step 1.** Attach flexi hinge assembly extension plate to floating dock. Plates will have to be spaced about 116-1/4" between plates so they will line up to corresponding plates on the ShorePort. Attach brackets to ShorePort and measure between to verify spacing.

**Step 2.** Assemble flexi hinge assembly. Slide connecting rod through hole in bottom of flexi hinge assembly weldment and attach using oval screw (you will have to drill a pilot hole for screw). Next insert 5/16 x 4-1/2" hex bolt through lock washer, rectangular washer and insert through hole in accessory top connector and thread into connector rod just enough to hold it together. Attach rubber plate to flexi hinge assembly weldment using one flexi hinge assembly angle, three 3/8 x 2 hex bolts and 3/8 nylock nuts. Attach two other flexi hinge assembly angles to other end of rubber plate using three 3/8 x 2 hex bolts and 3/8 nylock nuts (make sure to bolt through the holes not the slots).

**Step 3.** Attach previously assembled portion of flexi hinge assembly to front of ShorePort so the connecting rod will end up centered in the second vertical groove on the front of the ShorePort and attach the rear side flexi-hinge to the rear side of the ShorePort so its connector rod is centered in second groove from the back of the ShorePort. Leave connecting rod bolt loose.

**Step 4.** With no weight on the ShorePort float ShorePort next to floating dock and attach flexi hinge assembly extension plate to flexi hinge assembly angles using four 3/8 x 1-1/4 hex bolts, flat washers and nylock nuts. Make sure ShorePort is floating level in the water and rubber plate is level before attaching. After attached tighten all hardware. Torque 5/16" x 4-1/2" connector rod bolts to 20 ft/lbs. **DO NOT OVERTIGHTEN AND DO NOT USE A HIGH SPEED DRILL.**

**Note:** If you are in an area with heavy boat traffic or waves greater than 1'-6" use stand-off brackets and pipe brackets instead of the flexi hinge assembly. Side mount flexi-hinge assembly should be used to attach only one ShorePort parallel to dock. If multiple ShorePorts are to be attached side by side pipe brackets should be used instead of side mount flexi-hinge.

Kit includes front and back brackets to attach side of ShorePort to floating dock.

