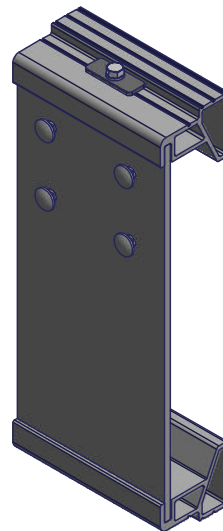


PolyDock Accessory Connector

Instructions

Part #: 1006608

Parts List			
ITEM	QTY	PART NUMBER	DESCRIPTION
1	1	1003252	Poly Dock Accessory Connector Plate
2	1	1005729	Dock Poly Top Accessory Connector
3	1	1005728	Prt Accessory Connector Bottom - Poly Dock 6.5
--	1	1004575	Bolt Bag Poly Dock Accessory Connector 2005
4	4	1001956	Bolt Carriage 3/8-16 x 1.0 SS 304
5	4	1001802	Nut Flange 3/8-16 Brass
-	1	1004512	Poly Connector Rod hardware bag
6	1	1007918	Poly Connector Rod
7	1	1002566	Screw Oval #12 x 1.0 SS
8	1	1001025	Bolt Hex 5/16 x 4.5 Full Thread SS
9	1	1001026	Washer Rectangular SS 1/8 x 2.0 x .75
10	1	1002606	Washer Lock 5/16 SS



Note: Assemble as shown. Use accessory connector to attach PolyDock Accessories as required.

Failure to follow instructions may result in personal injury and may invalidate the applicable warranty.

Step 1. Insert connector rod composite into bottom connector and secure using screw #12 x 1.0.

Step 2. Place Accessory Connector in desired location. Place top accessory connector over connector rod composite.

Step 3. Secure together by placing 3/8 lock washer followed by rectangular washer onto the 5/16 x 4-1/2 hex bolt and tighten to 20 ft/lbs.

Step 4. Insert 3/8 x 1.0 carriage bolts through respective holes of separately purchased accessory, then the accessory connector, and secure with 3/8 flange nuts.

